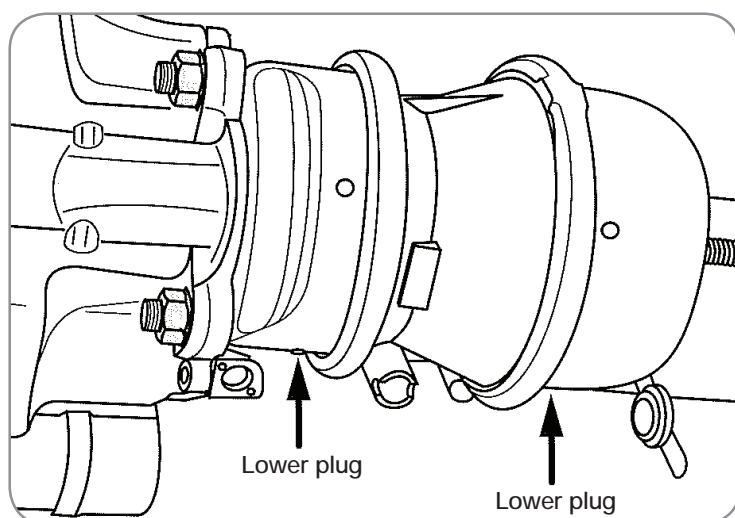
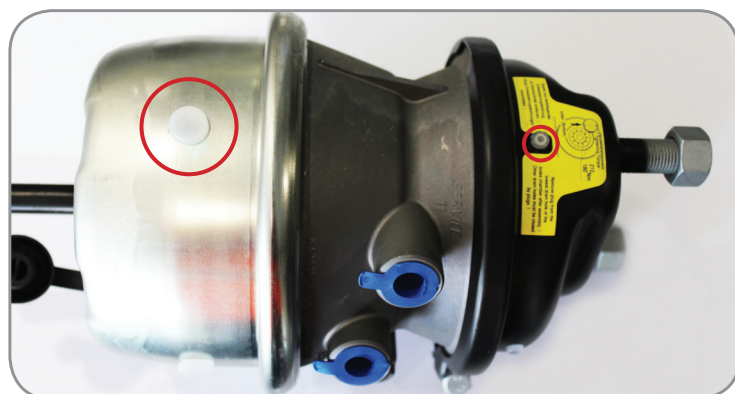


Installation of boosters on BPW disc braked axles

When the service and spring chambers are assembled to the disc brake calipers on BPW axles it is imperative the lower plugs on the service and spring brake chambers are removed.



Removal of the lower plugs is vital for the correct low pressure operation of the disc brake and for allowing condensate (water) to drain out. Leave all the other plugs in place.



Two plugs need to be removed. The plugs to be removed will depend on the orientation of the booster. It is always the lower plugs that need to be removed.



The plug still in place.



The plug removed.

Victoria (Head office)

1-11 Cherry Lane,
Laverton North Vic 3026

Phone (03) 9267 2444

Fax (03) 9369 4826

New South Wales

10 Squill Place,
Arndell Park NSW 2148

Phone (02) 8811 7000

Fax (02) 8811 7050

Queensland

10 Bernoulli Street,
Darra Qld 4076

Phone (07) 3217 0877

Fax (07) 3217 0230

Western Australia

1021 Abernethy Road,
High Wycombe WA 6057

Phone (08) 9454 4000

Fax (08) 9454 4111

1300 651 652

info@bpwtranspec.com.au

bpwtranspec.com.au