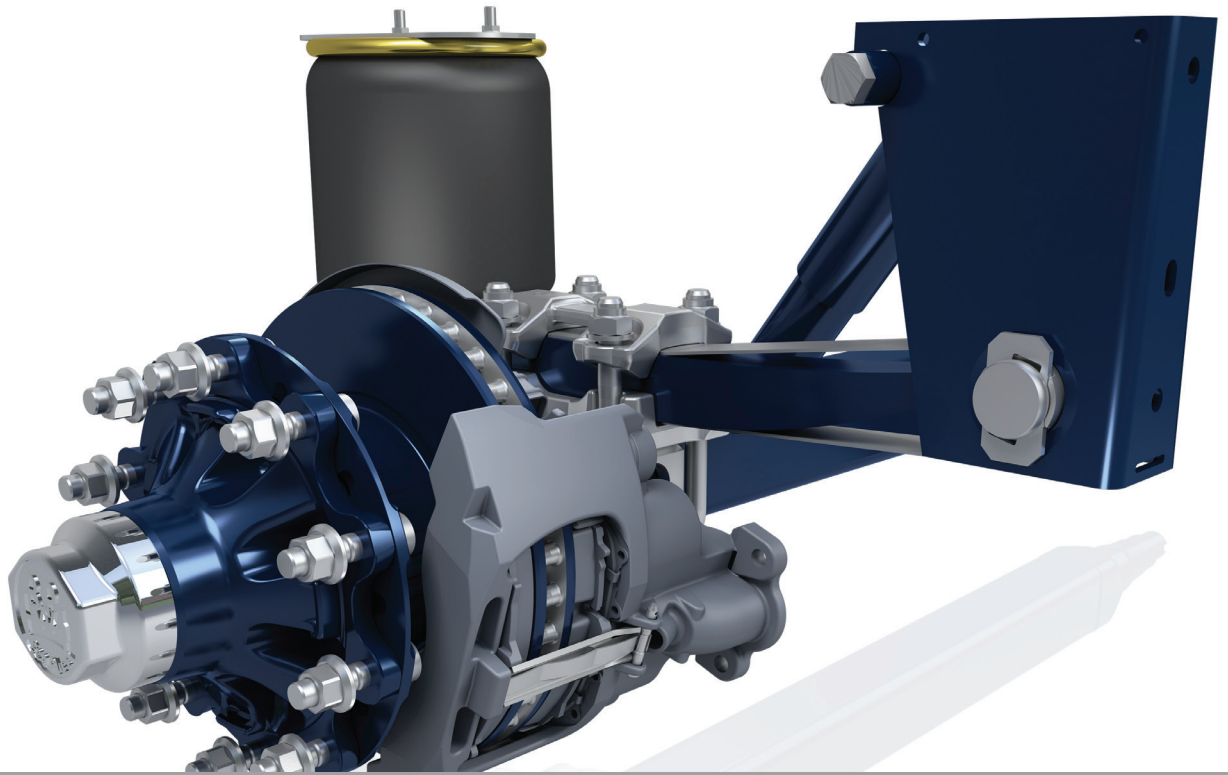




TRANSPEC

ENGINEERED TO LAST



BPW AIR SUSPENSION AIR LIGHT II SERIES

Spare Parts Catalogue
FOR AUSTRALIAN ASSEMBLED SUSPENSIONS



The information and advice contained in this brochure including prices and specifications are current and correct as at 1st March 2016 but may be subject to change.

BPW Transpec shall not be liable for any changes that occur after that date. It is your responsibility to contact your BPW Transpec branch or representative to ensure that all information and advice is up to date before placing an order.



Important note:

This catalogue shows parts for **ALII AIR SUSPENSIONS WITH M24 SPRING EYE BOLTS** only. For information regarding parts to suit M30 Spring eye bolts as well as for the other BPW Air suspension series please refer to our BPW Genuine Repair Kits Catalogue or contact BPW Transpec.

CONTENTS		PAGE
BPW Air suspension series		4
BPW Air suspension hangers	To suit M24 spring eye bolts	5
BPW Trailing arms and attachments	To suit M24 spring eye bolts	6
BPW Spring eye bolt assembly	To suit M24 spring eye bolts	7
BPW Axle clamping parts		8
BPW Shock absorber and attachments		9
BPW Airbags and airbag parts		10-11



BPW Genuine parts are carefully designed to give you the best in quality, reliability and life expectancy. They are put through rigorous testing both in Europe and around the world.

Our spare parts catalogues are designed to assist you in correctly identifying the parts you will need to service your BPW suspension systems.

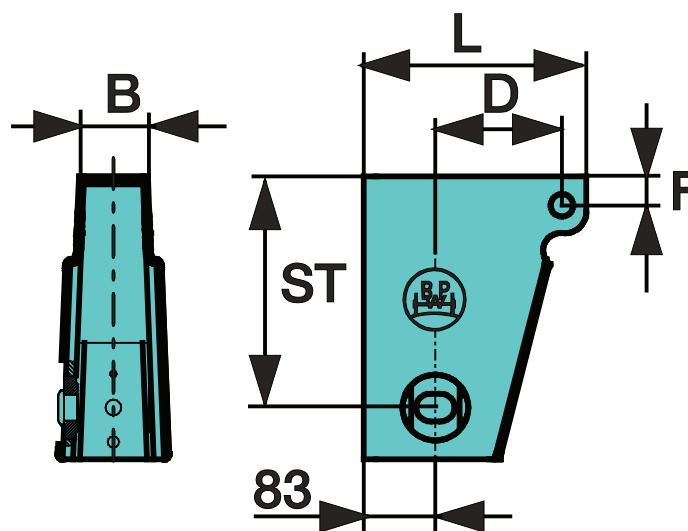
This particular book is intended to assist with the identification of spare parts for Australian assembled axles fitted with **AL II SERIES AIR SUSPENSIONS WITH M24 SPRING EYE BOLTS** only. It is not intended to give detailed technical service and/or maintenance information.

For technical service and/or maintenance information please refer to the BPW Operator's Manual and workshop manual or contact your nearest BPW Transpec Branch listed on the back cover of this book.

BPW AIR SUSPENSION SERIES					
	AL Series			SL Series	O Series
	AL (Air Light)	ALII (Air Light II) M30 spring eye bolts	ALII (Air Light II) M24 spring eye bolts	SL	O Heavy Duty
Spring type	Single leaf	Single leaf	Single leaf	Single leaf	Two leaf
Spring height	51mm	62mm	62mm	51mm	2x43mm
Spring width	100mm	70mm	70mm	100mm	100mm
Spring eye bolt	M30	M30	M24	M30	M30
Available airbags	D30, D30K, D36	D30, D30K, D36	D30, D30K, D36	D30, D30K, D36	D36
As of mid September 2008 the new ALII Suspension is supplied as the standard BPW Highway Suspension Series and from that date supersedes ALI and SL Series Suspension for all deliveries.					

BPW AIR SUSPENSION HANGERS

To suit M24 spring eye bolts



ALIGNABLE HANGERS						
Part no.	ST (mm)	B (mm)	D (mm)	F (mm)	L (mm)	Shape*
05.375.44.30.8	184	91	70	35	241	Tapered sides
05.375.44.31.8	268	84	150	41	259	Tapered sides
05.375.44.32.8	268	84	90	35	259	Tapered sides
05.375.44.33.8	350	105	100	150	300	Parallel sides

NON-ALIGNABLE HANGERS						
Part no.	ST (mm)	B (mm)	D (mm)	F (mm)	L (mm)	Shape*
05.375.44.45.8	268	84	150	41	259	Tapered sides
05.375.44.46.8	268	84	90	35	259	Tapered sides
05.375.44.47.8	350	105	100	150	300	Parallel sides

* Please check if the hanger is parallel or tapered by looking at the hanger in the direction of travel.

BPW TRAILING ARMS AND ATTACHMENTS

To suit M24 spring eye bolts



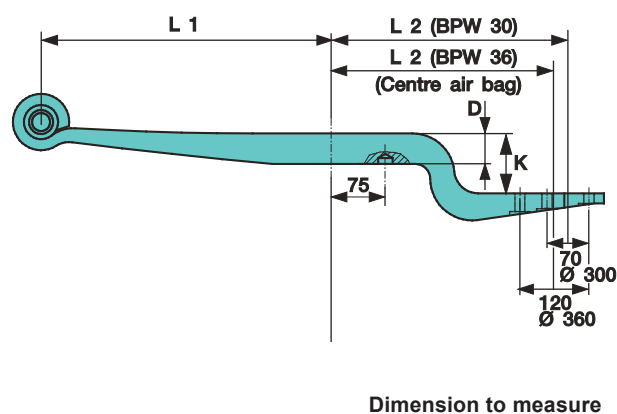
IDENTIFYING REPLACEMENT TRAILING ARMS AND CATCH STRAPS

In order to identify the right trailing arm you can find the last five digits of the BPW part number on the spring itself. They are punched into the underside of the tip of the trailing arm (in the area of the airbag).

All BPW trailing arm part numbers have 10 digits starting with: 05.082.

If this code is missing or no longer legible the type of trailing arm can be determined by taking the following measurements, referring to the diagram below:

1. Measure the thickness (D)
2. Measure the build height (BH)
3. Measure the dimension from the middle of the spring eye bolt to the middle of the axle (L1)
4. Measure the dimension from the middle of the axle to the centre of the airbag (L2)



Dimension to measure

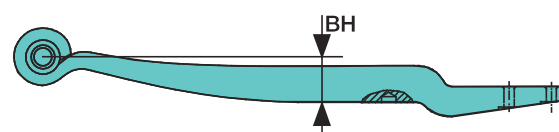


Fig A1

Fig A2

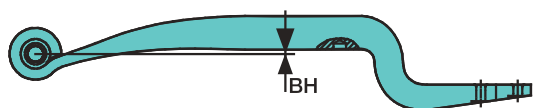
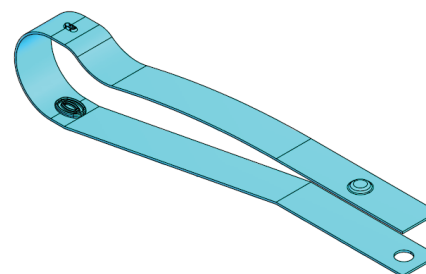


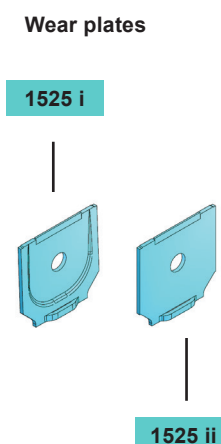
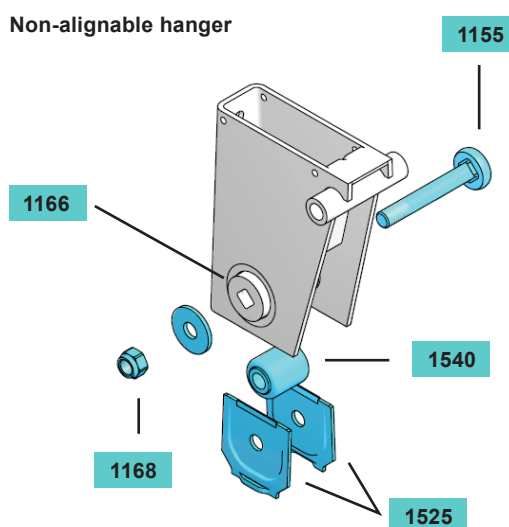
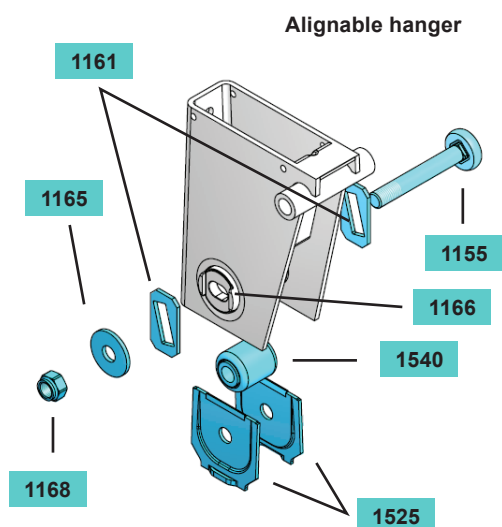
Fig B



Part no.	Description	Fig	BH (mm)	D (mm)	L1 (mm)	L2 (mm)
05.082.13.96.2 05.348.30.36.0 (Fig B)	Trailing arm Catch strap to suit	A1	80	62	500	380
05.082.14.02.2 05.348.30.36.0 (Fig B)	Trailing arm Catch strap to suit	A1	80	62	500	310
05.082.13.95.2 05.348.30.37.0 (Fig B)	Trailing arm Catch strap to suit	A2	10	62	500	380

BPW SPRING EYE BOLT ASSEMBLY

To suit M24 spring eye bolts



SPRING EYE BOLT ASSEMBLY PARTS										
KITS							PARTS			
Description	Hanger shape*		Alignable	Non-alignable	Kit no.	Qty per axle	Item	Part no.	Description	Qty
	Parallel sided	Tapered sided								
Spring eye bolt kit (alignable)		✓	✓		0203142KIT-1ALT	1	1155	03.340.14.20.0	Spring eye bolt M24 x 166	2
							1161	03.281.44.25.0	Alignment plate	2
							1165	03.320.33.28.0	Spring eye washer M24	4
							1168	03.260.14.13.0	Spring eye nut	2
							1525 i	03.164.35.03.0	Wear plate (tapered hanger)	4
							1540	02.0314.24.00	Steel rubber steel bush	2
	✓		✓		0203142KIT-1ALP	1	1155	03.340.14.20.0	Spring eye bolt M24 x 166	2
							1161	03.281.44.25.0	Alignment plate	2
							1165	03.320.33.28.0	Spring eye washer M24	4
							1168	03.260.14.13.0	Spring eye nut	2
							1525 ii	03.164.35.04.0	Wear plate (parallel hanger)	4
							1540	02.0314.24.00	Steel rubber steel bush	2
Spring eye bolt kit (non-alignable)	✓			✓	0203142KIT-P	1	1155	03.340.14.20.0	Spring eye bolt M24 x 166	2
							1165	03.320.33.28.0	Spring eye washer M24	2
							1168	03.260.14.13.0	Spring eye nut	2
							1525 ii	03.164.35.04.0	Wear plate (parallel hanger)	4
							1540	02.0314.24.00	Steel rubber steel bush	2
							1155	03.340.14.20.0	Spring eye bolt M24 x 166	2
		✓		✓	0203142KIT-T	1	1165	03.320.33.28.0	Spring eye washer M24	2
							1168	03.260.14.13.0	Spring eye nut	2
							1525 i	03.164.35.03.0	Wear plate (tapered hanger)	4
							1540	02.0314.24.00	Steel rubber steel bush	2
							1166	03.113.00.56.0	Hanger bosses	1
							1166	03.113.03.10.0		1

* Please check if the hanger is parallel or tapered by looking at the hanger in the direction of travel.

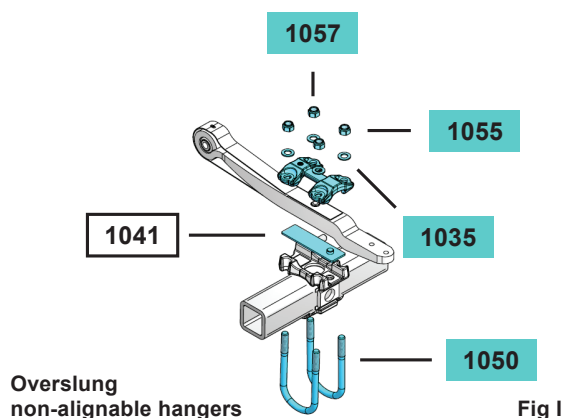


Fig I

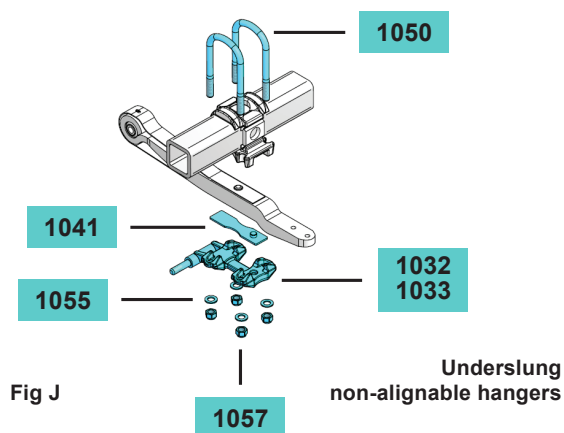


Fig J

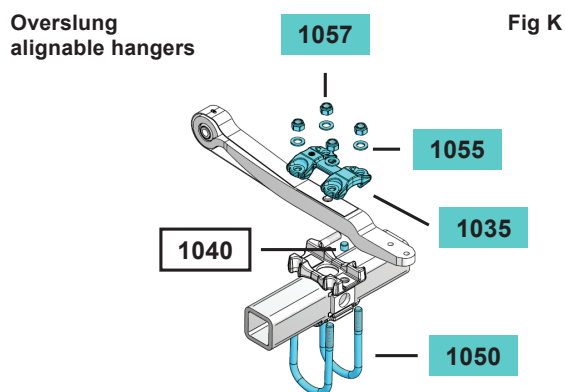


Fig K

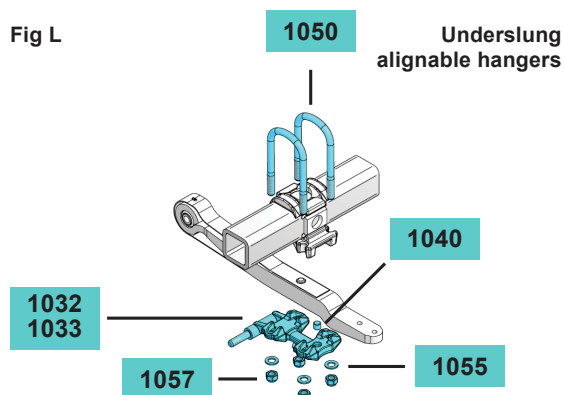
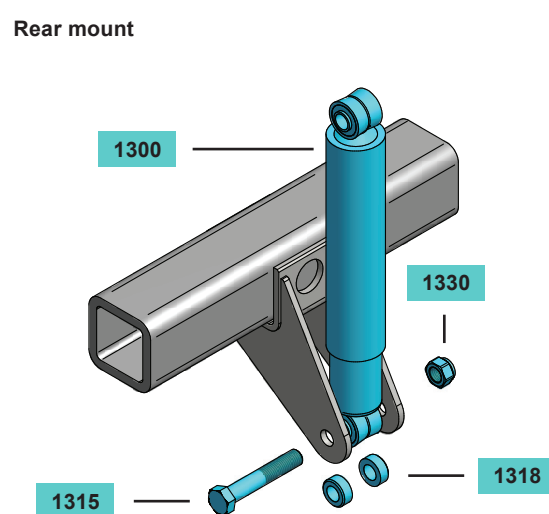
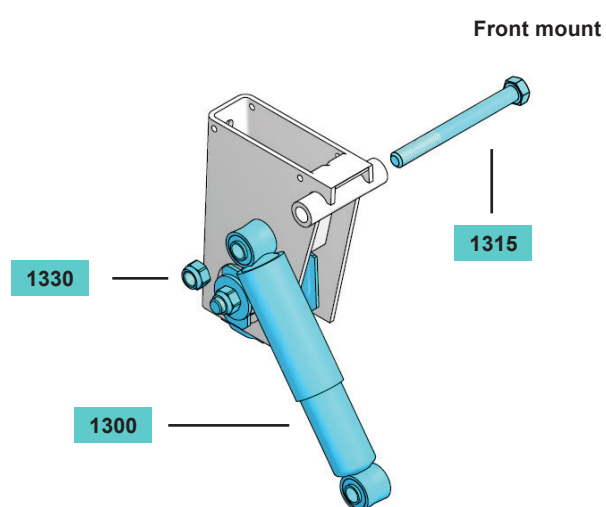


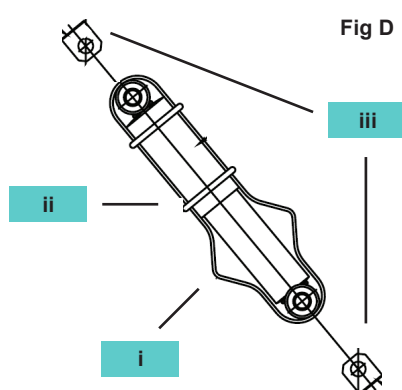
Fig L

					OVERSLUNG		UNDERSLUNG					
					disc brake and drum brake		disc brake	drum brake				
Item	Fig	Part no.	Description	Qty per axle	non-alignable hangers	alignable hangers	non-alignable and alignable hangers	non-alignable hangers		alignable hangers		
								front mount shocker	rear mount shocker	front mount shocker	rear mount shocker	
1032	J,L	05.145.25.06.0	Spring plate right hand	1				✓		✓		
1033	J,L	05.145.25.07.0	Spring plate left hand	1				✓		✓		
1035	I,K	03.145.25.05.0	Spring plate	2	✓	✓			✓		✓	
1040	K,L	03.084.74.43.0	Dowel	2		✓				✓		
1041	I	0328136140AL2	Alignment plate with dowel	2	✓							
1041	J	0328136140AL2US	Alignment plate	2			✓	✓	✓		✓	
1050	I,J,K,L	03.138.41.01.4	U bolt round [*] (use with dowels)	4	✓	✓	✓	✓	✓	✓	✓	
1050	I,J,K,L	03.138.41.19.4	U bolt round [*] (use with dowels)	4	✓	✓	✓	✓	✓	✓	✓	
1055	I,J,K,L	02.5401.25.07	M24 washer	8	✓	✓	✓	✓	✓	✓	✓	
1057	I,J,K,L	02.5220.74.12	M24 nut	8	✓	✓	✓	✓	✓	✓	✓	

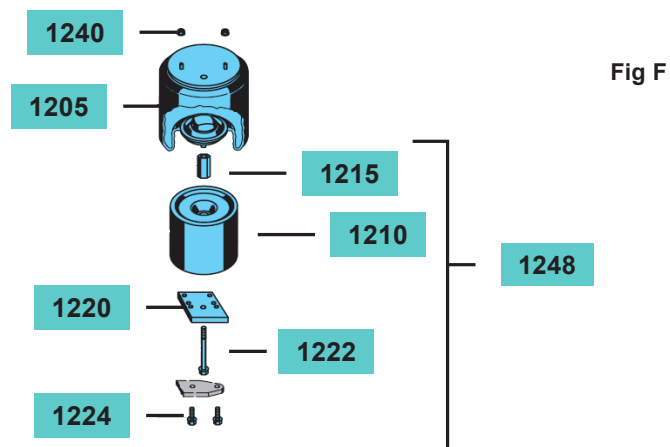
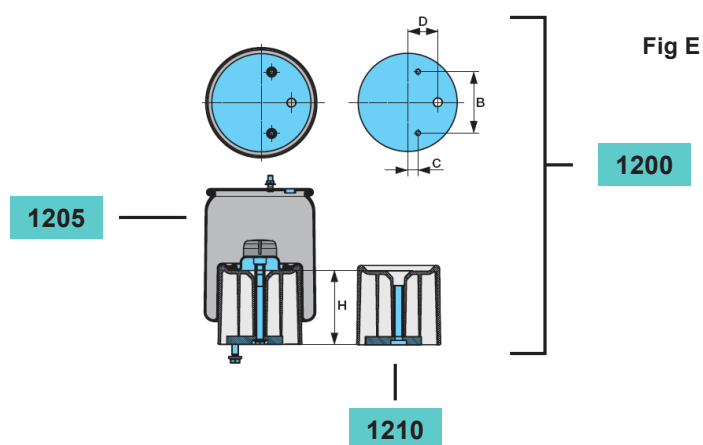
* For suspensions fitted to BPW disc brake axles with 377mm rotor diameter (predominantly for disc brake axles to suit 19.5" tyres) flat U bolts part number 03.138.41.13.0 are used. These should only be used in conjunction with axle seats that are made to suit flat U bolts.



Item	Part no.	Description	Qty per axle front mount	Qty per axle rear mount
1300	02.3722.83.02	Shock absorber 326-496mm	2	
1300	02.3702.18.02	Shock absorber 475-800mm		2
1330	02.5220.74.12	M24 nut lock	4	4
1315	03.340.14.19.0	M24 x 240 shocker mount bolt	2	
1315	02.5023.49.80	M24 x 140 shocker mount bolt rear mount		2
1318	03.310.31.38.0	Lower shock spacer		4
Figure D				
i	* See below	Webbing sling	2	2
ii	AS0002	Rubber ring	4	4
iii	AS0001	Webbing sling retainer	4	4



* The part number for the sling will depend on the suspension. To obtain the correct part number (e.g. AS0025/....) please refer to the tag on the sling or contact BPW Transpec.

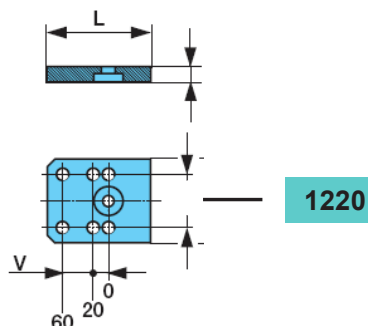


Airbag type	PARTS / KITS			KITS INCLUDE			
	Item	Description	Part no.	Item	Description	Part no.	
D30	1200	Airbag assembly GFK AUST	05.429.43.66.0				
	1205	Airbag bellow AUST	05.429.42.57.0				
	1240	Lock nut	02.5273.33.80				
	1248	Airbag piston GFK kit	05.801.09.73.0	1210	Piston GFK	05.139.39.50.0	
				1215	Threaded sleeve	03.179.03.08.0	
				1220	Base plate	03.280.95.02.0	
				1222	Centre bolt	03.340.12.23.0	
				1224	Bolt airbag spring	02.5070.95.00	
D30K	1200	Airbag assembly GFK AUST	05.429.43.65.0				
	1205	Airbag bellow AUST	05.429.42.56.0				
	1240	Lock nut	02.5273.33.80				
	1248	Airbag piston GFK kit	05.801.09.74.0	1210	Piston GFK	05.139.39.51.0	
				1215	Threaded sleeve	03.179.03.08.0	
				1220	Base plate	03.280.95.02.0	
				1222	Centre bolt	03.340.12.24.0	
				1224	Bolt airbag spring	02.5070.95.00	
D36	1200	Airbag assembly GFK AUST	05.429.43.69.0				
	1205	Airbag bellow AUST	05.429.42.58.0				
	1240	Lock nut	02.5273.33.80				
	1248	Airbag piston GFK kit	05.801.21.32.0	1210	Piston GFK	05.139.39.52.0	
				1215	Threaded sleeve	03.179.03.08.0	
				1220	Base plate (offset 45/80mm)	03.280.95.03.0	
				1222	Centre bolt	03.340.12.23.0	
				1224	Bolt airbag spring	02.5070.95.00	

D: diameter **K:** short **GFK:** glass fibre piston **AUST:** special rubber material with high UV resistance

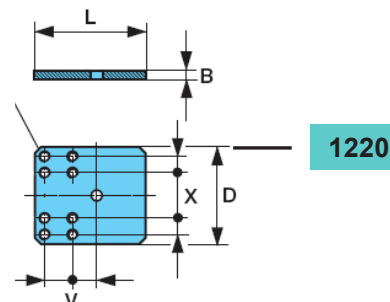
Base plates D30/D30K

Fig G



Base plates D36

Fig H



			Dimension						
	Fig.	Qty	V	X	H	B	C	D	L
	E	1	0/20/60	70	180	150	25	70	
	E,F	1							
	F	2	M 12						
	E,F	1	Ø203x194						
	F	1	M 16x51 / SW 24						
	G	1	0/20/60	70		20		110	135
	F	1	M 16x160 - 10.9 / SW 22						
	F	2	M 16x65 / SW 22						
	E	1	0/20/60	70	135	150	25	70	
	E,F	1							
	F	2	M 12						
	E,F	1	Ø203x149						
	F	1	M 16x51 / SW 24						
	G	1	0/20/60	70		20		110	135
	F	1	M 16x115 - 10.9 / SW 22						
	F	2	M 16x65 / SW 22						
	E	1	45/80	70/120	180	210	25	95	
	E,F	1							
	F	2	M 12						
	E,F	1	Ø253x188						
	F	1	M 16x51 / SW 24						
	H	1	45/80	70/120		20		150	170
	F	1	M 16x160 - 10.9 / SW 22						
	F	2	M 16x65 / SW 22						

SW: spanner width

Please note:

When replacing airbags it is recommended to replace:

O Ring M 22

Part number 02.5677.02.00 and

thrust ring M 22

Part number 02.5671.08.00



TRANSPEC

ENGINEERED TO LAST

NEW SOUTH WALES

10 Squill Place
Arndell Park, NSW 2148

p (02) 8811 7000
f (02) 8811 7050

QUEENSLAND

Cnr Archerfield Road & Bernoulli Street
Darra, QLD 4076

p (07) 3217 0877
f (07) 3217 0230

WESTERN AUSTRALIA

1021 Abernethy Road
High Wycombe, WA 6057

p (08) 9454 4000
f (08) 9454 4111

VICTORIA (Head Office)

1 - 11 Cherry Lane
North Laverton, VIC 3026

p (03) 9267 2444
f (03) 9369 4826

www.bpwtranspec.com.au
sales@bpwtranspec.com.au

1300 651 652