



# TRANSPEC

ENGINEERED TO LAST



## BPW AIR SUSPENSION AL/SL/O SERIES FOR 100MM WIDE TRAILING ARMS

Spare Parts Catalogue  
FOR AUSTRALIAN ASSEMBLED SUSPENSIONS



**Important note:**

This catalogue shows parts for **AL/SL/O SERIES 100mm WIDE TRAILING ARMS WITH M30 SPRING EYE BOLTS** only. For information regarding parts to suit M24 Spring eye bolts as well as for the other BPW Air suspension series (70mm) please refer to our BPW Air Suspension Air Light Series Catalogue or contact BPW Transpec.

CONTENTS		PAGE
BPW Air suspension series		3
BPW Air suspension hangers	To suit M30 spring eye bolts	4
BPW Catch straps and attachments		5
BPW Shock absorber and attachments		6
BPW Spring eye bolt assembly	To suit M30 spring eye bolts	7
BPW Axle clamping parts		8
BPW U-Bolts		9
BPW Axle clamping parts	120mm square axle beam	10-11
BPW Axle clamping parts	150mm square axle beam	12-13
BPW Axle clamping parts	127mm round axle beam	14-15
BPW Trailing arms		16
BPW Trailing arms and attachments		17
BPW Airbags and airbag parts		18-19

The information and advice contained in this brochure including prices and specifications are current and correct as at 1<sup>st</sup> April 2017 but may be subject to change.

BPW Transpec shall not be liable for any changes that occur after that date. It is your responsibility to contact your BPW Transpec branch or representative to ensure that all information and advice is up to date before placing an order.



BPW Genuine parts are carefully designed to give you the best in quality, reliability and life expectancy. They are put through rigorous testing both in Europe and around the world.

Our spare parts catalogues are designed to assist you in correctly identifying the parts you will need to service your BPW suspension systems.

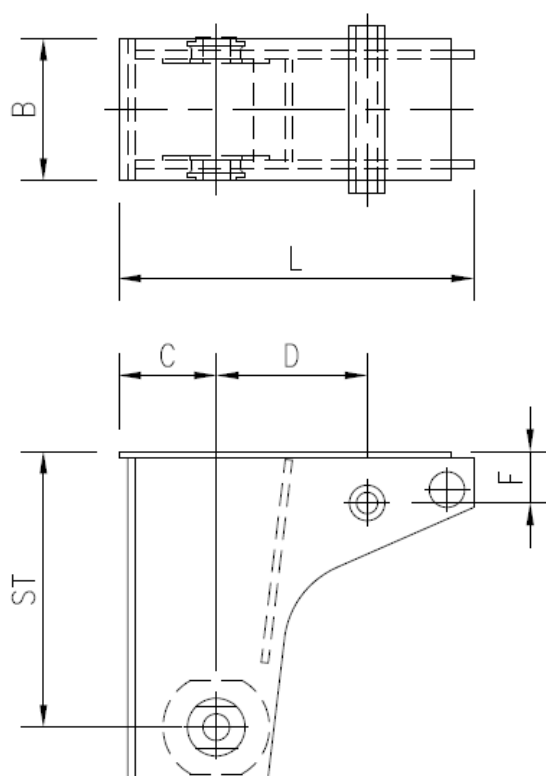
This particular book is intended to assist with the identification of spare parts for Australian assembled axles fitted with **AL/SL/O SERIES FOR 100mm WIDE TRAILING ARMS WITH M30 SPRING EYE BOLTS** only. It is not intended to give detailed technical service and/or maintenance information.

For technical service and/or maintenance information please refer to the BPW Operator's Manual or contact your nearest BPW Transpec Branch listed on the back cover of this book.

BPW AIR SUSPENSION SERIES					
	AL Series			SL Series	O Series
	AL (Air Light I)	ALII (Air Light II) M30 spring eye bolts	ALII (Air Light II) M24 spring eye bolts	SL	O Heavy Duty
Spring type	Single leaf	Single leaf	Single leaf	Single leaf	Two leaf
Spring height	51mm	62mm	62mm	51mm	2x43mm
Spring width	100mm	70mm	70mm	100mm	100mm
Spring eye bolt	M30	M30	M24	M30	M30
Available airbags	D30, D30K, D36	D30, D30K, D36	D30, D30K, D36	D30, D30K, D36	D36
As of mid September 2008 the new ALII Suspension is supplied as the standard BPW Highway Suspension Series and from that date supersedes ALI and SL Series Suspension for all deliveries.					

# BPW AIR SUSPENSION HANGERS

To suit M30 spring eye bolts



## BPW FABRICATED HANGERS

Part no.	ST (mm)	B (mm)	D (mm)	F (mm)	L (mm)	C (mm)
0537566280	192	160		43	255	110
0537566290	400	160		43	255	110
0537576130B	268	160	85	43	255	110
AS-0112B	310	160	170	58	400	110
AS-0129	310	160			350	110
AS-0110B	310	160	260	43	400	110

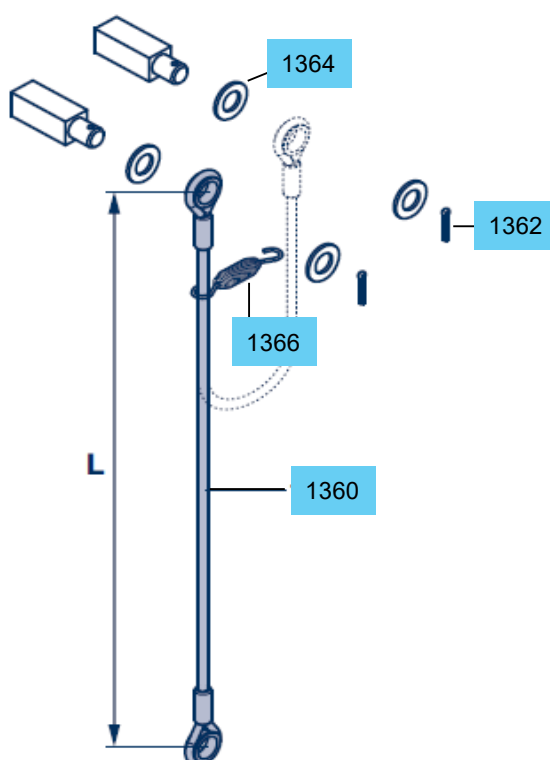
Fully fabricated hangers manufactured in house.

All pressed hangers contact BPW Transpec for replacement hanger details.

### Please note:

Hangers with welded pegs are now replaced with a shocker tube and bolt to suit.

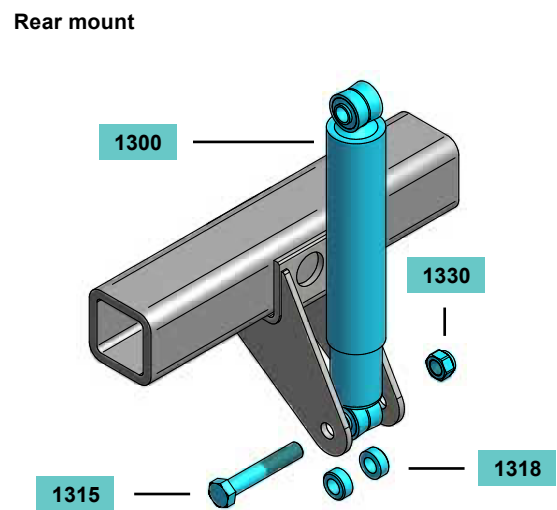
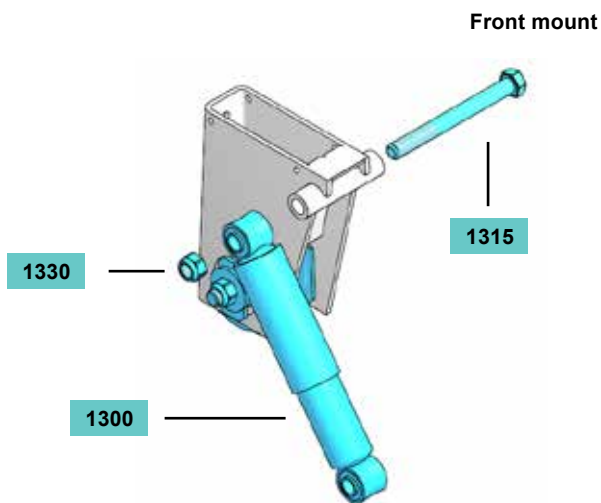
Part no.	Description
03.300.74.16.0	Tube-Shocker mount 40/25x187
03.340.14.12.0	Bolt M24 x 270 shocker mount
02.5220.74.12	Nut Lock M24



STEEL CATCH STRAPS			
Item	Part no.	Length (L)	Qty per axle
1360	05.327.14.01.0	1220mm	2
	05.327.14.02.0	1160mm	2
	05.327.14.03.0	1120mm	2
	05.327.14.04.0	940mm	2
	05.327.14.05.0	1010mm	2
	05.327.14.06.0	1060mm	2
	05.327.14.07.0	1455mm	2
	05.327.14.08.0	1330mm	2
	05.327.14.09.0	1270mm	2
	05.327.14.10.0	1415mm	2
	05.327.14.11.0	1500mm	2
	05.327.14.12.0	1550mm	2
	05.327.14.14.0	1390mm	2
	05.327.14.18.0	1570mm	2
	05.327.14.19.0	1350mm	2
	05.327.14.20.0	1685mm	2
	05.327.14.21.0	1775mm	2

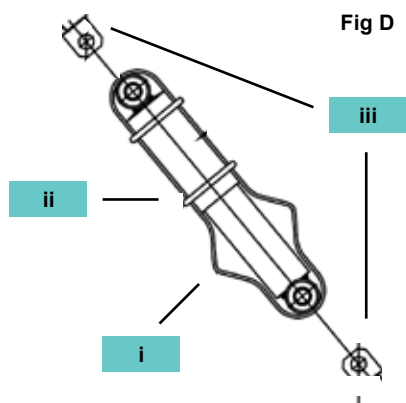
CATCH STRAP ATTACHMENTS			
Item	Part no.	Description	Qty per axle
1362	02.6201.61.01	Split Pin	4
1364	02.5401.31.01	Washer M31x4	8
1366	05.397.26.03.0	Spring	2

Please contact BPW Transpec for details regarding peg mounts.



Item	Part no.	Description	Qty per axle front mount	Qty per axle rear mount
1300	02.3722.83.02	Shock absorber 326-496mm	2	
1300	02.3702.18.02	Shock absorber 475-800mm		2
1330	02.5220.74.12	M24 nut lock	4	4
1315	03.340.14.12.0	M24 x 270 shocker mount bolt	2	
1315	02.5023.49.80	M24 x 140 shocker mount bolt rear mount		2
1318	03.310.31.38.0	Lower shock spacer (17.5mm thick)		4
<b>Figure D</b>				
i	* See below	Webbing sling	2	2
ii	AS0002	Rubber ring	4	4
iii	AS0001	Webbing sling retainer	4	4

Please contact BPW Transpec regarding top shocker pegs for rear mount.



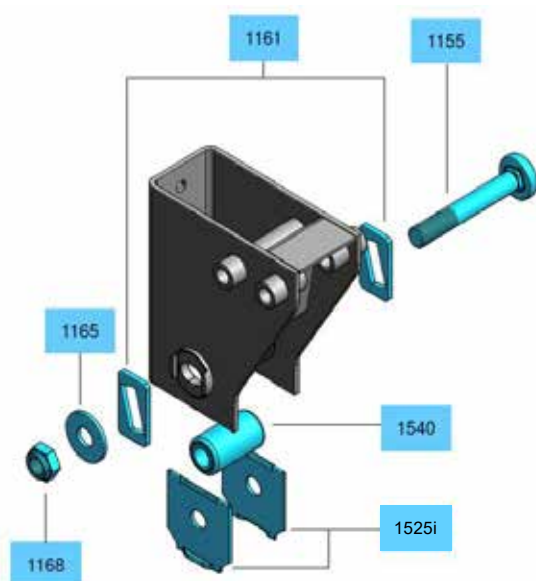
\* The part number for the sling will depend on the suspension. To obtain the correct part number (e.g. AS0025/....) please refer to the tag on the sling or contact BPW Transpec.

# BPW SPRING EYE BOLT ASSEMBLY

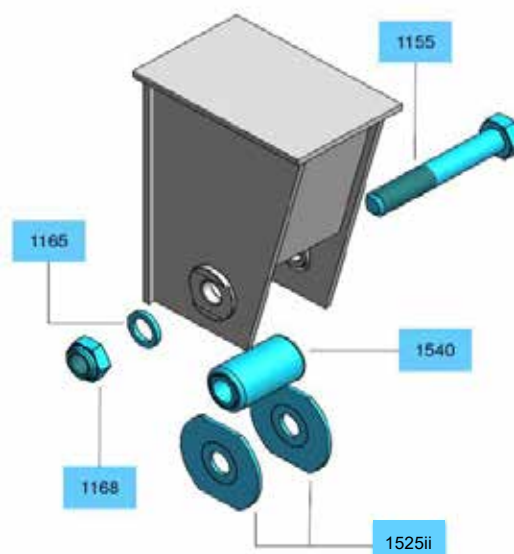
To suit M30 spring eye bolts



Alignable hanger



Non-alignable hanger

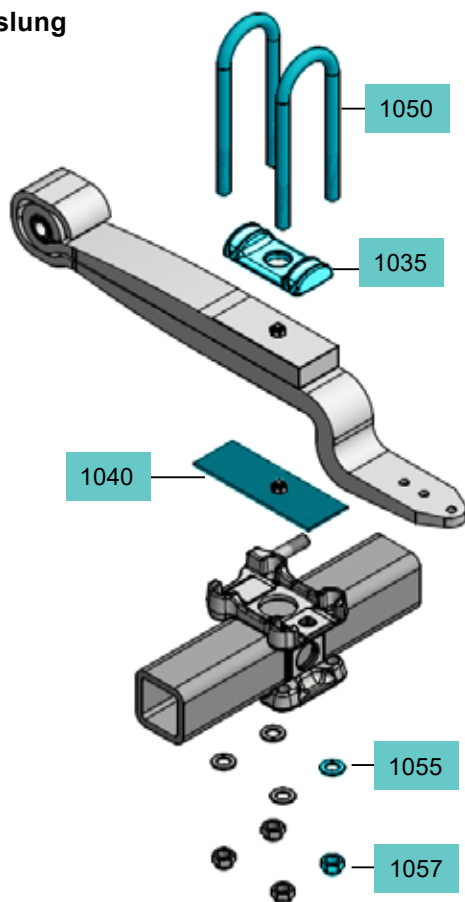


## SPRING EYE BOLT ASSEMBLY PARTS

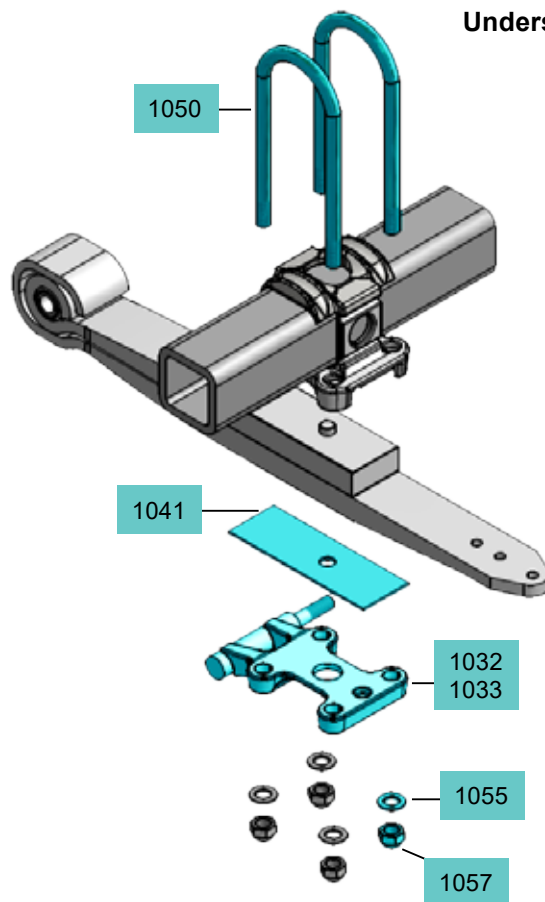
KITS							PARTS			
Description	Hanger shape*		Alignable	Non-alignable	Kit no.	Qty per axle	Item	Part no.	Description	Qty
	Parallel sided	Tapered sided								
Spring eye bolt kit (alignable)	✓		✓		0203169KIT-1AL	1	1155	03.341.05.04.0	Spring eye bolt SL	2
							1161	03.281.54.18.0	Alignment plate	2
							1165	03.320.34.53.0	Spring eye washer M30	4
							1168	03.260.15.01.0	Spring eye nut M30	2
							1525 i	03.164.35.01.0	Wear plate	4
							1540	02.0316.90.00	Spring eye steel bush	2
Spring eye bolt kit (non-alignable)	✓			✓	0203169KIT	1	1155	03.340.15.27.0	Spring eye bolt M30 x 190	2
							1165	03.320.31.27.0	Spring eye washer 45.5/31/6	2
							1168	03.260.15.01.0	Spring eye nut M30	2
							1525 ii	AS-0191	Wear plate	4
							1540	02.0316.90.00	Spring eye steel bush	2
			✓			4	1166	0311302060TS	Hanger bosses	2
								03.113.23.01.0		2

\* Please check if the hanger is parallel or tapered by looking at the hanger in the direction of travel.

## Overslung



## Underslung

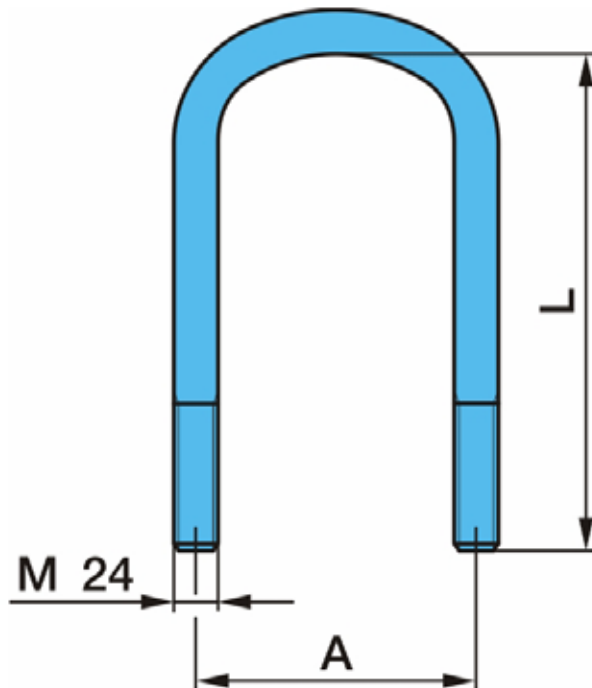


				OVERSLUNG		UNDERSLUNG				
				disc brake and drum brake		disc brake	drum brake			
Item	Part no.	Description	Qty per axle	non-alignable hangers	alignable hangers	non-alignable and alignable hangers	non-alignable hangers		alignable hangers	
							front mount shocker	rear mount shocker	front mount shocker	rear mount shocker
1032	05.145.25.22.0	Spring plate right hand	1				✓		✓	
1033	05.145.25.23.0	Spring plate left hand	1				✓		✓	
1035	03.145.10.39.0	Spring plate	2	✓	✓			✓		✓
1040	0328136140TS	Alignment plate with dowel	2	✓						
1041	03.281.37.08.0	Alignment plate	2			✓	✓	✓		✓
1055	02.5401.25.07	Washer M24	8	✓	✓	✓	✓	✓	✓	✓
1057	02.5220.74.12	Nut lock M24	8	✓	✓	✓	✓	✓	✓	✓

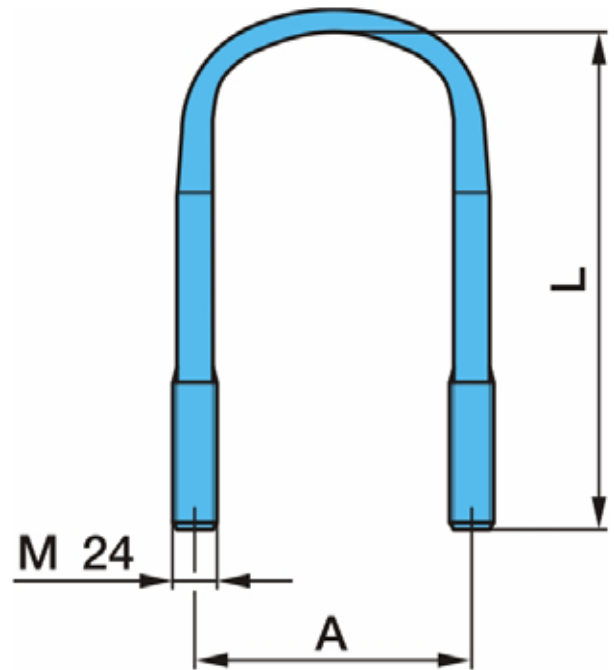
\* For suspensions fitted to BPW disc brake axles with 377mm rotor diameter (predominantly for disc brake axles to suit 19.5" tyres) flat U bolts are used. These should only be used in conjunction with axle seats that are made to suit flat U bolts. Please use page 9 for more information regarding U-Bolts.



Round U-Bolt



Flat U-Bolt



BPW U-BOLTS									
Item	Part no.	Description	Qty per axle	Round	Flat	A (mm)	L (mm)	Overslung	Underslung
1050	03.138.44.08.4	U-Bolt M24	4	✓		125	280	✓	
	03.138.44.04.4			✓		125	301	✓	
	03.138.44.15.4			✓		125	320	✓	
	03.138.44.01.4			✓		125	356	✓	
	03.138.41.33.4				✓	152	283	✓	
	03.138.41.17.4			✓		152	290		✓
	03.138.41.13.4			✓		152	300		✓
	03.138.41.08.4			✓		152	320		✓
	03.138.45.07.4			✓		180	360		✓

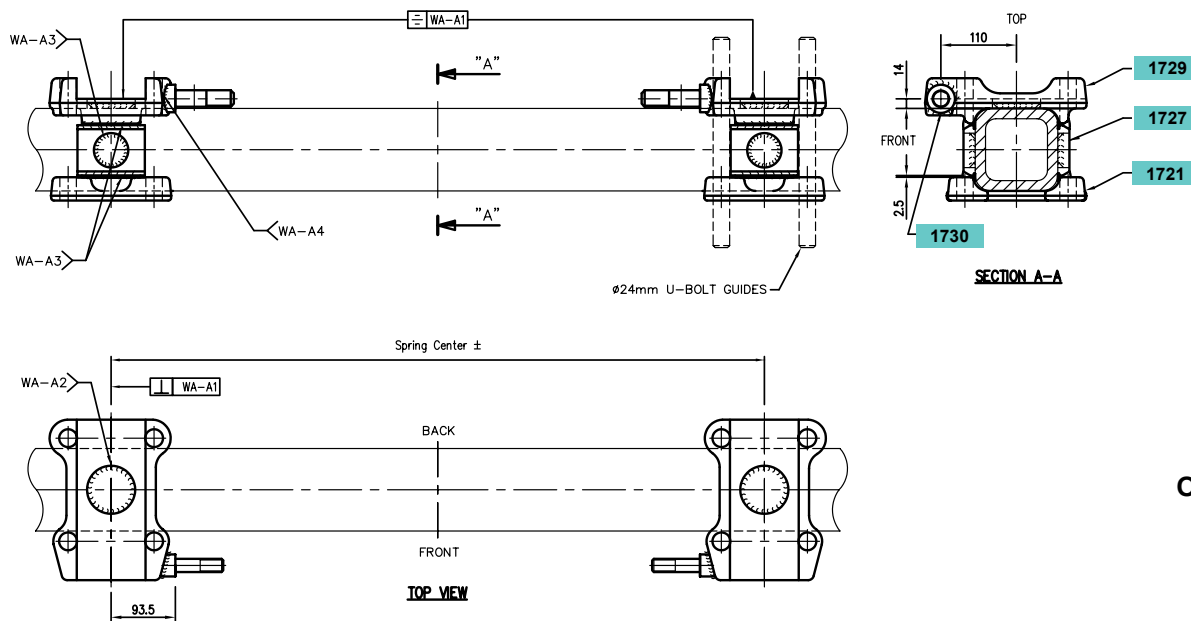
**Please Note:** Not all U-Bolts are listed above. If you require further information, please contact BPW Transpec.

# BPW AXLE CLAMPING PARTS

120mm square beam



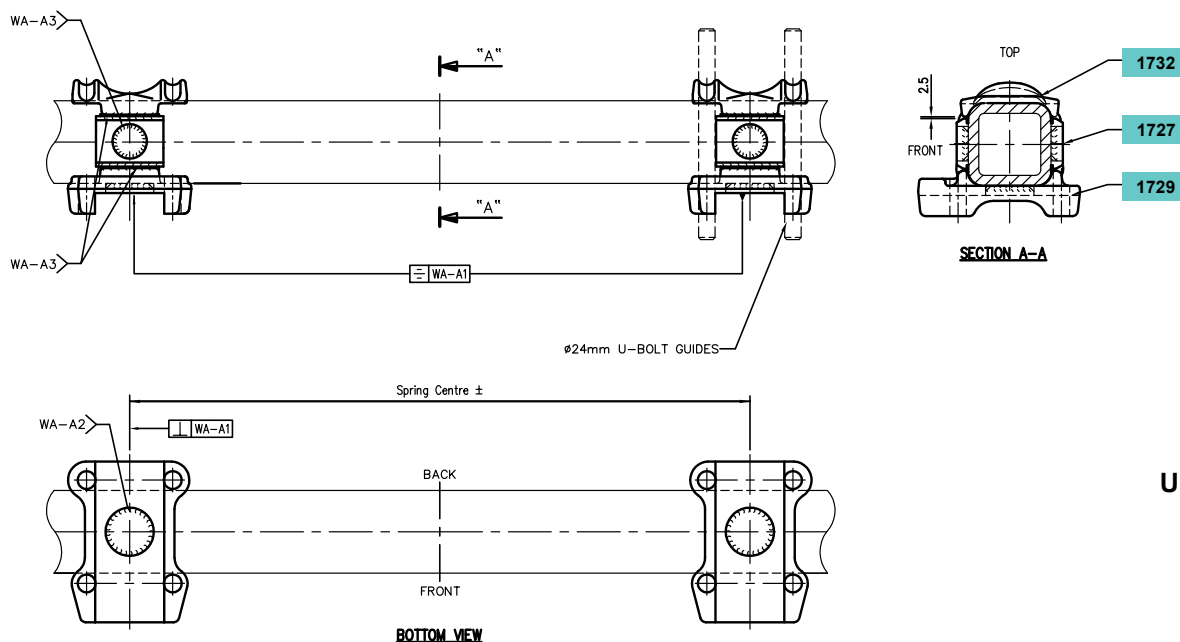
## WA-C01



Overslung

Item no.	Part no.	Description	Qty
1730	03.177.24.21.0	Peg shocker MNT M24 RND 32X25.. SLM side mount	2
1721	03.032.17.05.1	A/Seat 120mm OT	2
1729	03.032.21.46.8D	Seat 120AX RH round hole drilled for peg	1
	03.032.21.45.8D	Seat 120AX LH round hole drilled for peg	1
1727	03.001.35.18.0	Plate side 120 welded seat	4

## WA-C02



Underslung

Item no.	Part no.	Description	Qty
1729	03.032.21.45.8	Seat 120AX LH round hole	1
	03.032.21.46.8	Seat 120AX RH round hole	1
1727	03.001.35.18.0	Plate side 120 welded seat	4
1732	03.345.23.15.1	Plate segment OT 120	2

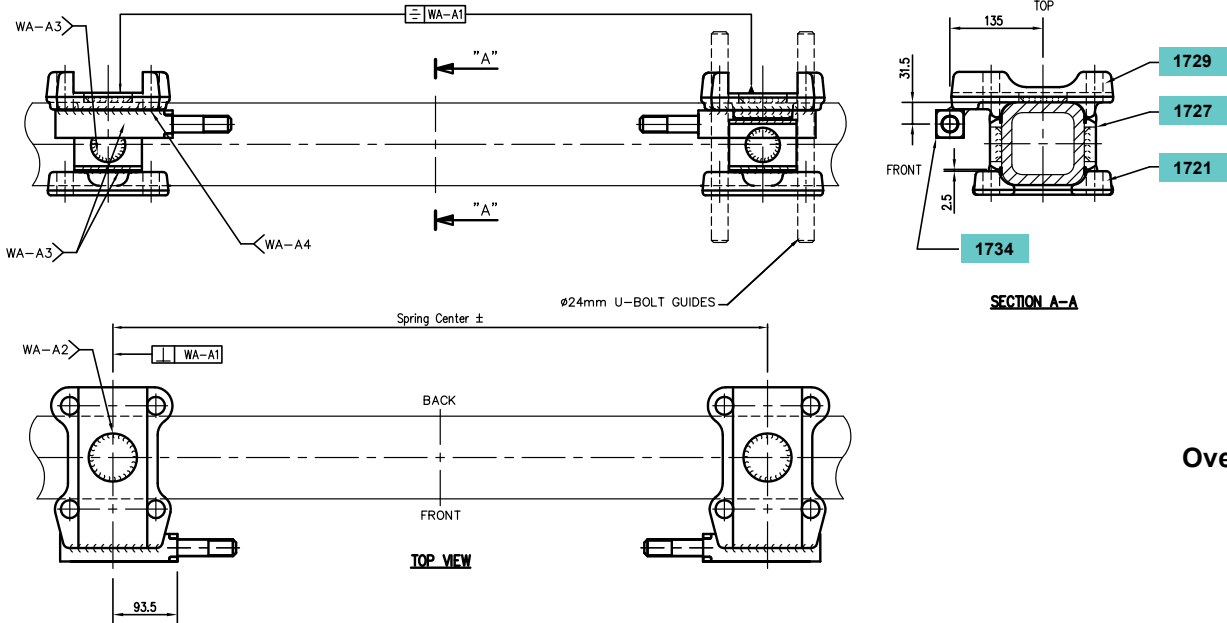
**Note:** Please contact BPW Transpec for pre-heat and welding instructions

# BPW AXLE CLAMPING PARTS

120mm square beam



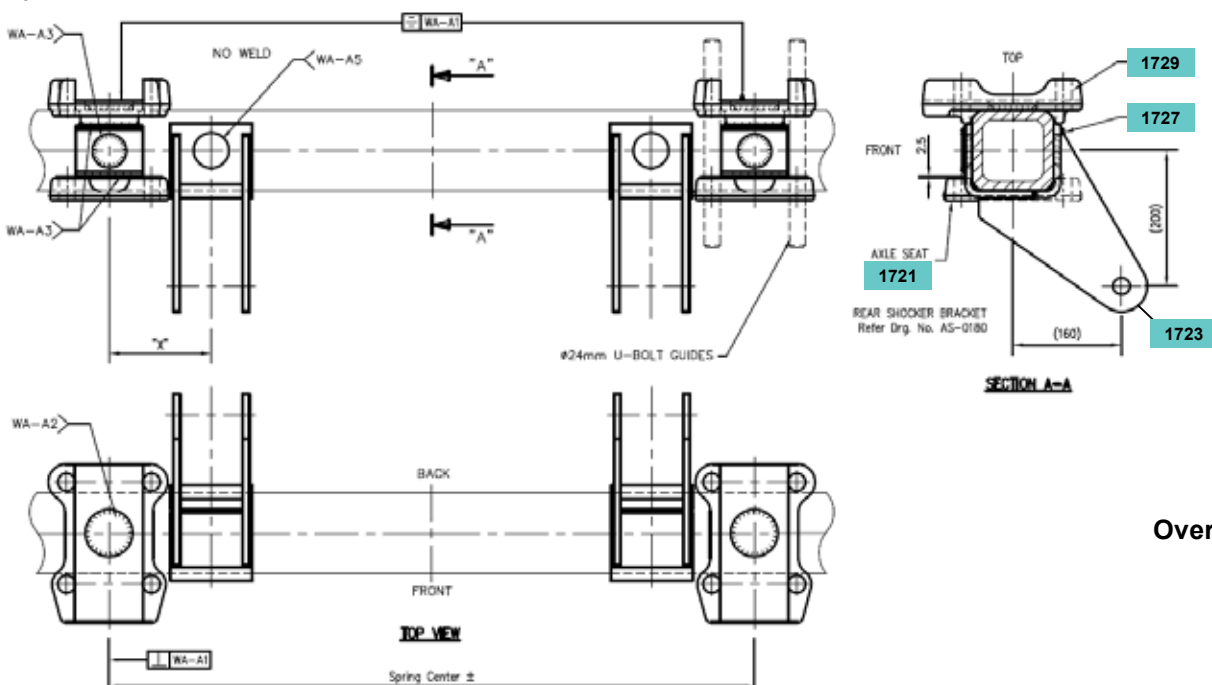
## WA-C03



Overslung

Item no.	Part no.	Description	Qty
1721	03.032.17.05.1	A/Seat 120mm OT	2
1729	03.032.21.45.8	Seat 120AX LH round hole drilled for peg	1
	03.032.21.46.8	Seat 120AX RH round hole	1
1727	03.001.35.18.0	Plate side 120 welded seat	4
1734	03.177.04.09.0	Bolt MTG shock FR/BOT axle seat	2
	03.177.24.52.0	Peg shocker MNT M24 SQ 40x167	2

## WA-C04



Overslung

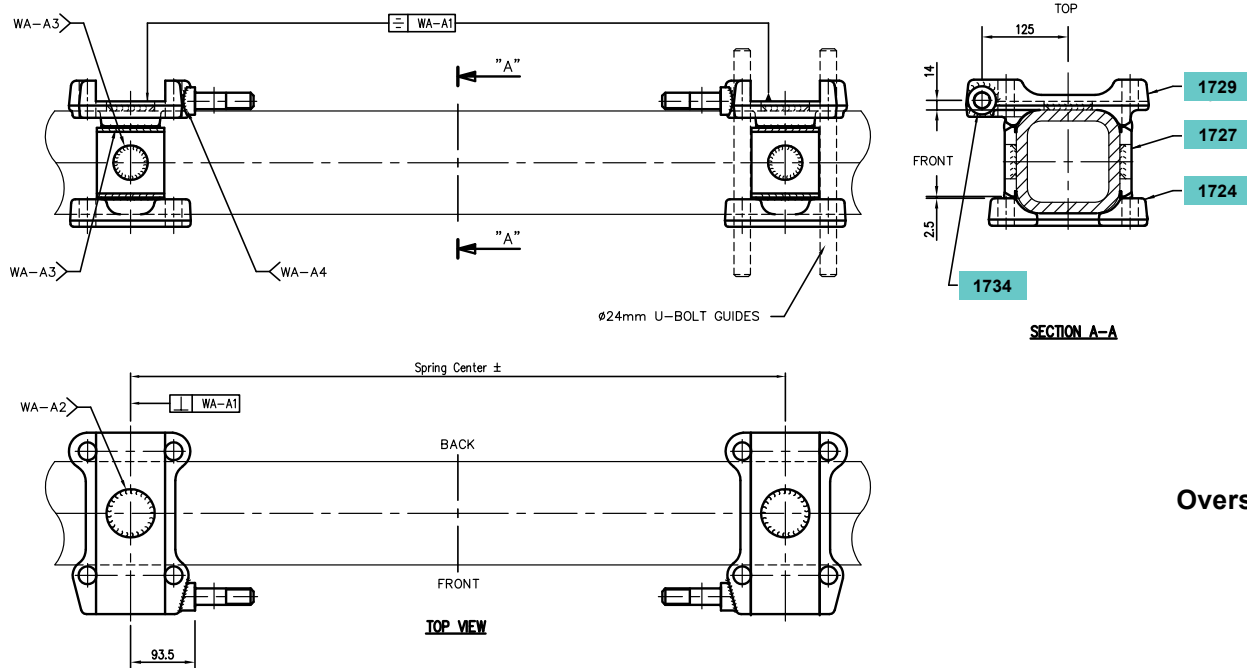
Item no.	Part no.	Description	Qty
1721	03.032.17.05.1	A/Seat 120mm OT	2
1729	03.032.21.45.8	Seat 120AX LH round hole	1
	03.032.21.46.8	Seat 120AX R/H round hole	1
1727	03.001.35.18.0	Plate side 120 welded seat	4
1723	AS-0180/3	Rear shocker mount AS-0180/1 & AS-0180/2 welded	2
	AS-0180/4	Pressed s/plate rear shock mount 100mm to suit 120mm SQ axle	2

# BPW AXLE CLAMPING PARTS

150mm square beam



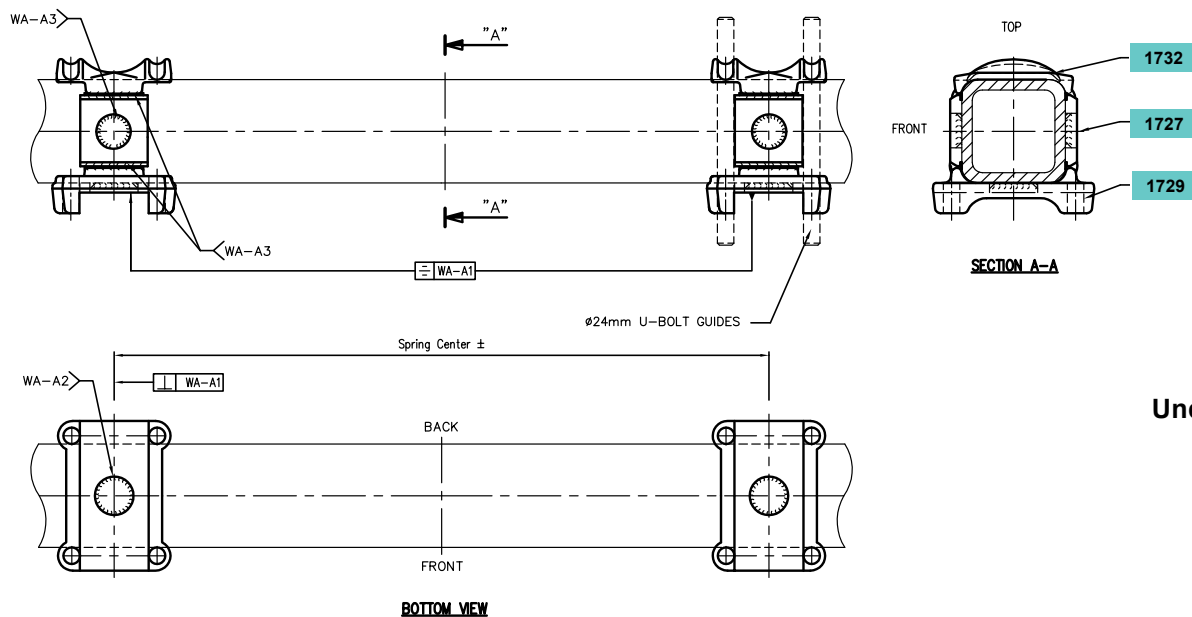
## WA-B01



Overslung

Item no.	Part no.	Description	Qty
1729	03.032.10.43.0DLH	A/Seat 150mm SQ OM drilled LH	1
	03.032.10.43.0DRH	A/Seat 150mm SQ OM drilled RH	1
1724	03.032.19.26.0	A/Seat bottom OM150 UB-down	2
1727	0316184050TS	Plate side & 2mm pack 150 SQ	4
1734	03.177.24.21.0	Peg shocker MNT M24 RND 32X25.. SLM side mount	2

## WA-B02



Underslung

Item no.	Part no.	Description	Qty
1729	03.032.10.44.0	A/Seat 150mm SQ OT	2
1732	03.345.25.05.1	Plate segment 150SQ air	2
1727	0316184050TS	Plate side & 2mm pack 150 SQ	4

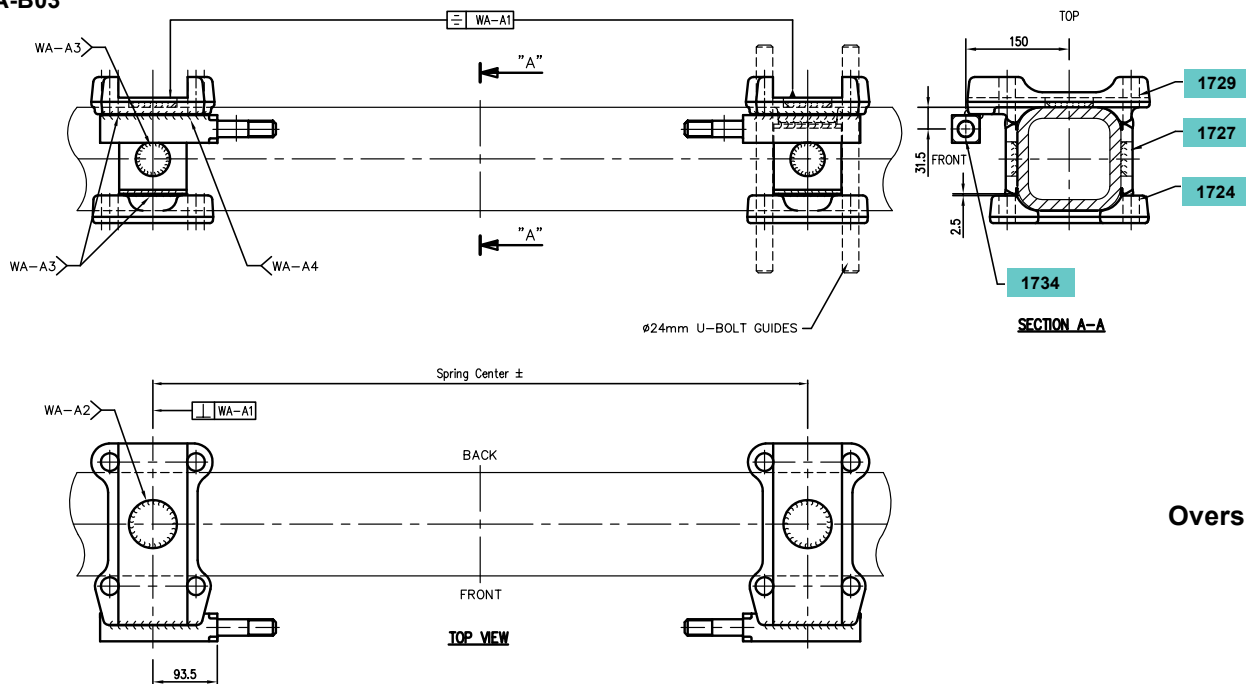
**Note:** Please contact BPW Transpec for pre-heat and welding instructions

# BPW AXLE CLAMPING PARTS

150mm square beam



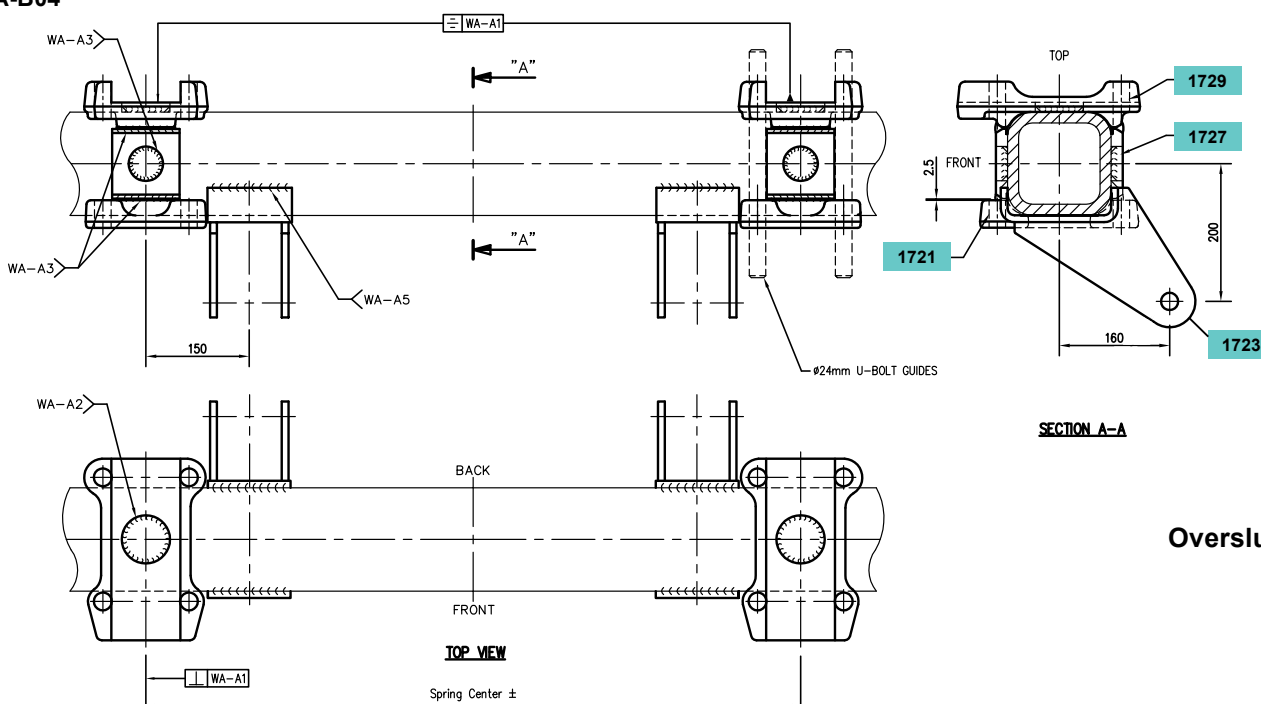
## WA-B03



Overslung

Item no.	Part no.	Description	Qty
1729	03.032.10.43.0	A/Seat 150mm SQ OM	2
1724	03.032.19.26.0	A/Seat bottom OM150 UB-down	2
1727	0316184050TS	Plate side & 2mm pack 150 SQ	4
1734	03.177.24.52.0	Peg shocker MNT M24 SQ 40X167	2

## WA-B04



Overslung

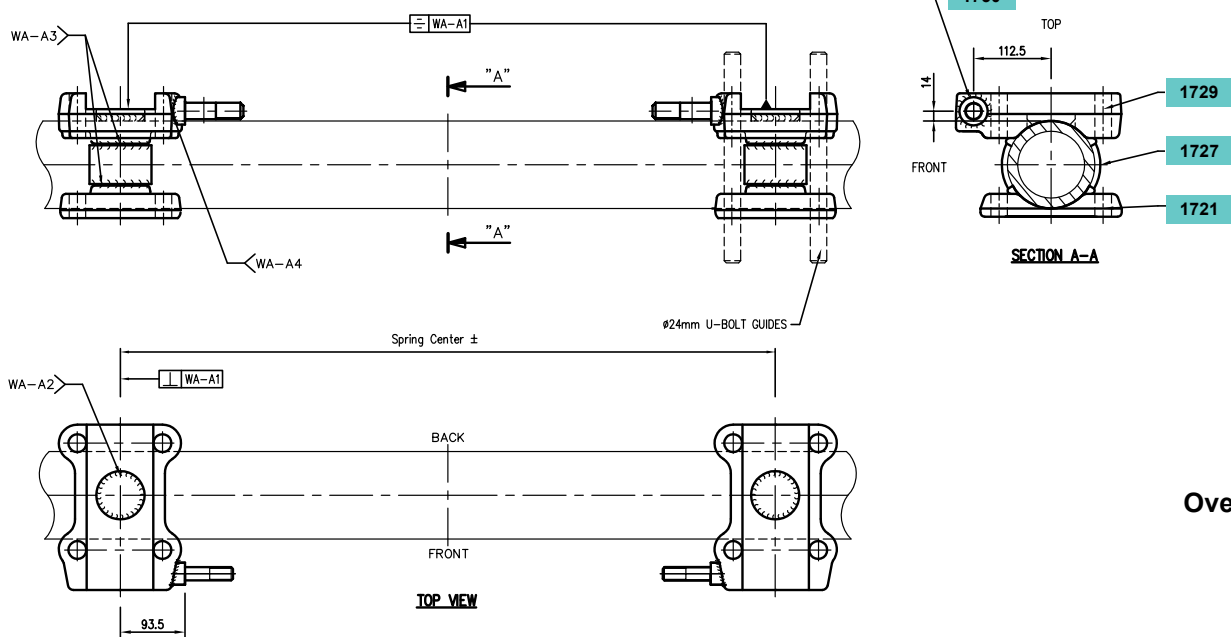
Item no.	Part no.	Description	Qty
1721	03.032.10.43.0	A/Seat 150mm SQ OM	2
1729	03.032.19.26.0	A/Seat bottom OM150 UB-down	2
1727	0316184050TS	Plate side & 2mm pack 150 SQ	4
1723	05.189.07.16.0	Mount shocker OM150 rear	2

# BPW AXLE CLAMPING PARTS

## 127mm round beam



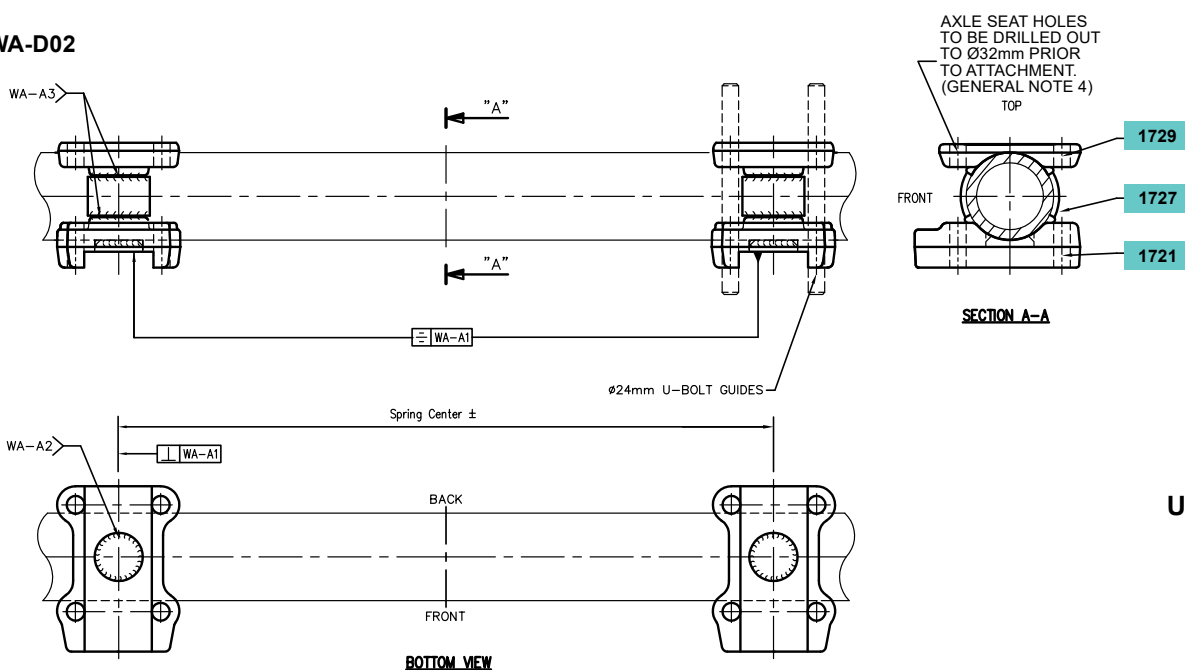
### WA-D01



Overslung

Item no.	Part no.	Description	Qty
1721	0303238130M	A/Seat spring 127mm OT modified	2
1729	03.032.58.18.0MDLH	A/Seat spring 127mm OM OT mach/drill for peg LH	1
	03.032.58.18.0MDRH	A/Seat spring 127mm OM OT mach/drill for peg RH	1
1727	03.163.53.01.0	Plate distance OT	4
1730	03.177.24.21.0	Peg shocker MNT M24 RND 32X25.. SLM side mount	2

### WA-D02



Underslung

Item no.	Part no.	Description	Qty
1721	0303238130M	A/Seat spring 127mm OT modified	2
1729	03.032.58.18.0M	A/Seat spring 127mm OM OT machined	2
1727	03.163.53.01.0	Plate distance OT	4

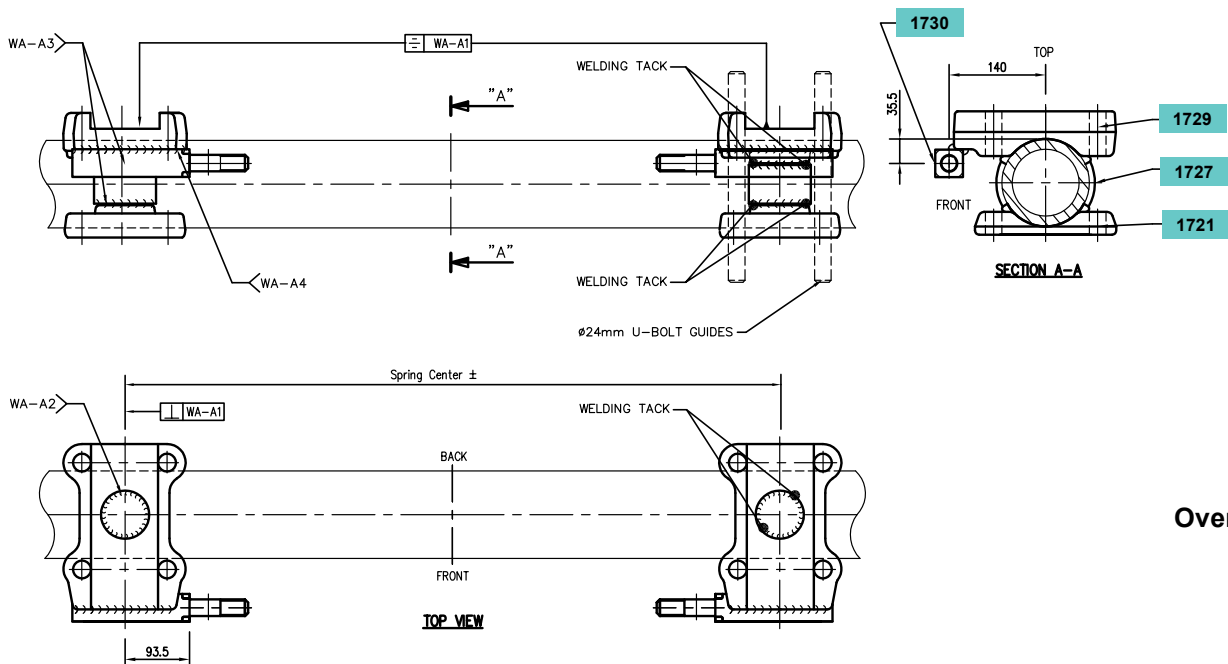
**Note:** Please contact BPW Transpec for pre-heat and welding instructions

# BPW AXLE CLAMPING PARTS

## 127mm round beam



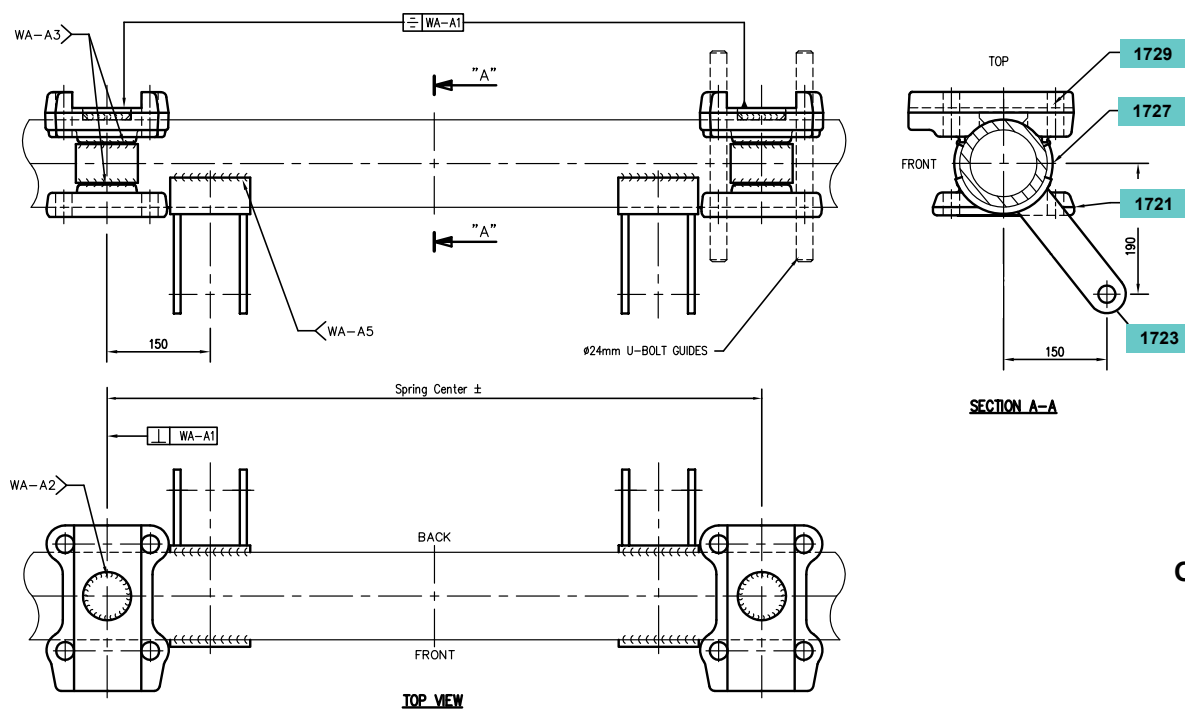
### WA-D03



Overslung

Item no.	Part no.	Description	Qty
1721	0303238130M	A/Seat spring 127mm OT modified	2
1729	03.032.58.18.0	A/Seat spring 127mm OM OT machined	2
1727	0316184050TS	Plate distance OT	4
1730	03.177.24.52.0	Peg shocker MNT M24 SQ 40X167	2

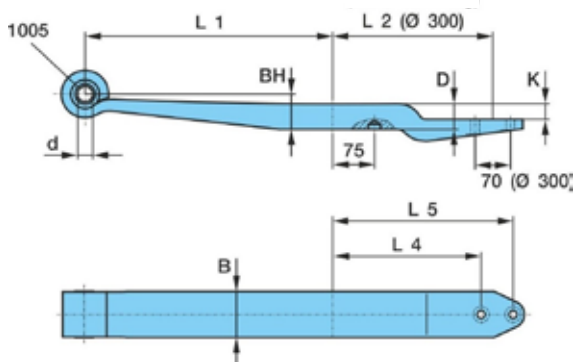
### WA-D04



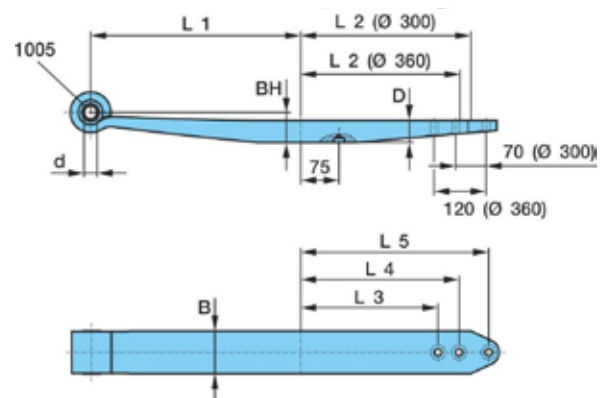
Overslung

Item no.	Part no.	Description	Qty
1721	0303238130M	A/Seat spring 127mm OT modified	2
1729	03.032.58.18.0M	A/Seat spring 127mm OM OT machined	2
1727	03.163.53.01.0	Plate distance OT	4
1723	0518906850TS	BRKT LWR shock 1270 OMNEW	2

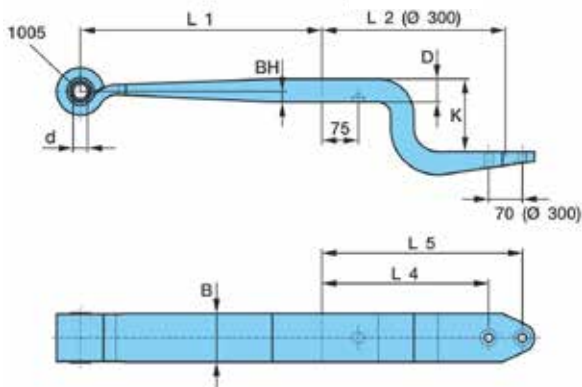
**A1**



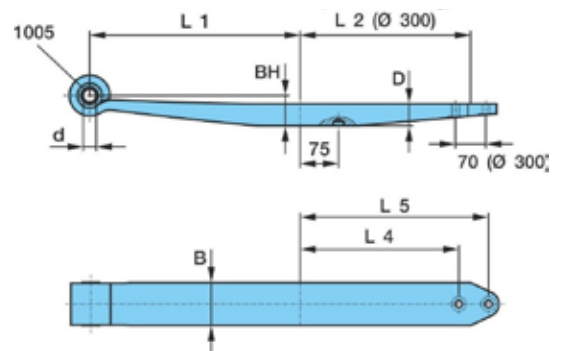
**A2**



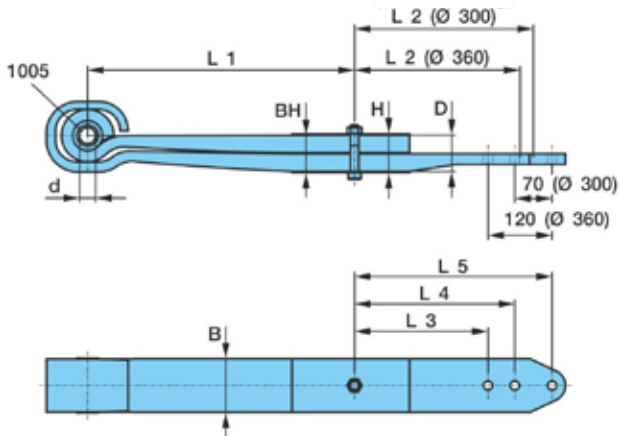
**A3**



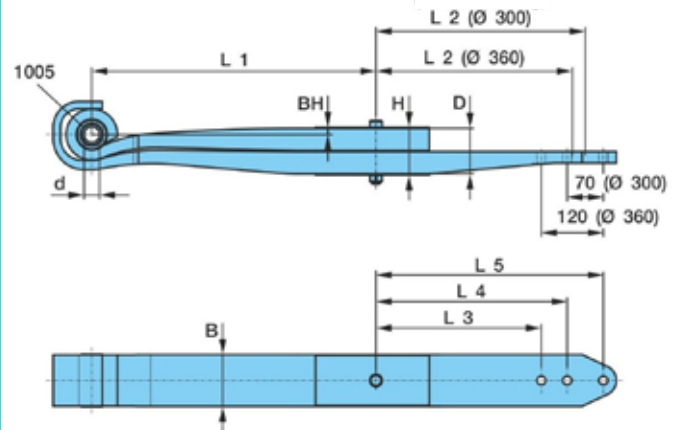
**A4**



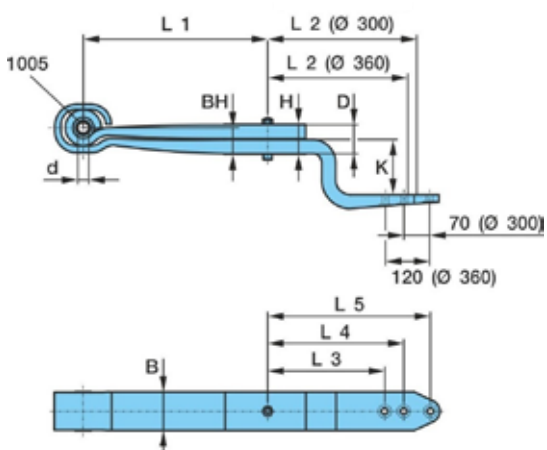
**A5**



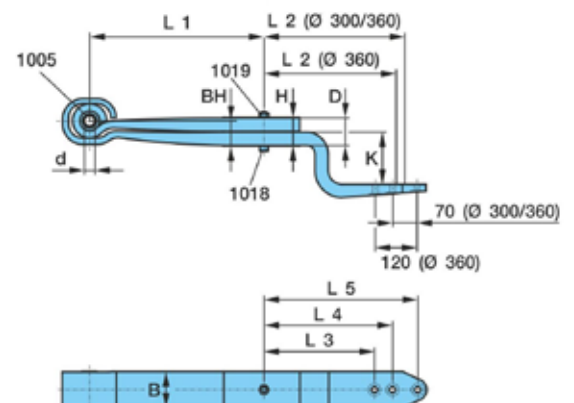
**A6**



**A7**



**A8**





## Identifying Replacement Trailing Arms and Spring Straps

In order to identify the right trailing arm, you can find the last five digits of the BPW part number on the spring itself. They are punched into the underside of the tip of the trailing arm (in the area of the airbag).

All BPW trailing arm part numbers have 10 digits starting with: **05.082**.

If this code is missing or no longer legible, the type of trailing arm can be determined by taking the measurements, referring to the diagram below.

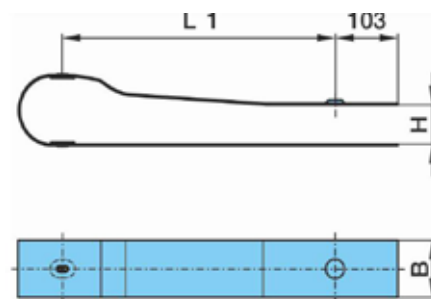
	Part no.	Description	Fig	Catch Strap (Fig B)	D (mm)	H (mm)	K (mm)	BH (mm)	L1 (mm)	BPW 30 L2 (mm)	BPW 36 L2 (mm)	L3	L4	L5
AL	05.082.13.59.0	Trailing arm	A1	05.348.30.05.0	1x51		30	70	500	310			275	345
SL	05.082.13.18.0	Trailing arm	A2	05.348.30.05.0	1x51			70	500	380	355	295	345	415
SL	05.082.13.19.0	Trailing arm	A3	05.348.30.05.0	1x51		150	22	500	380			345	415
SL	05.082.13.48.0	Trailing arm	A4	05.348.30.05.0	1x51			70	500	310	310		275	345
O	05.082.02.24.0	Trailing arm	A5		2x40	86		72	550	335	310	250	300	370
OT	05.082.12.83.0	Trailing arm	A6		2x43	92		14	550	405	380	320	370	440
OM	05.082.13.33.0	Trailing arm	A7		2x43	92	150	72	500	405	380	320	370	440
OM	05.182.13.24.0	Trailing arm	A8		2x43	95	120	74	550	405	380	320	370	440

### Important note:

Not all trailing arms are mentioned above. If you require a trailing arm not listed please contact BPW Transpec.

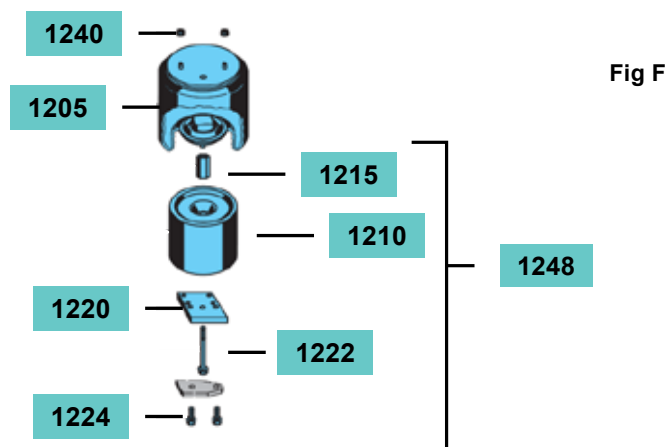
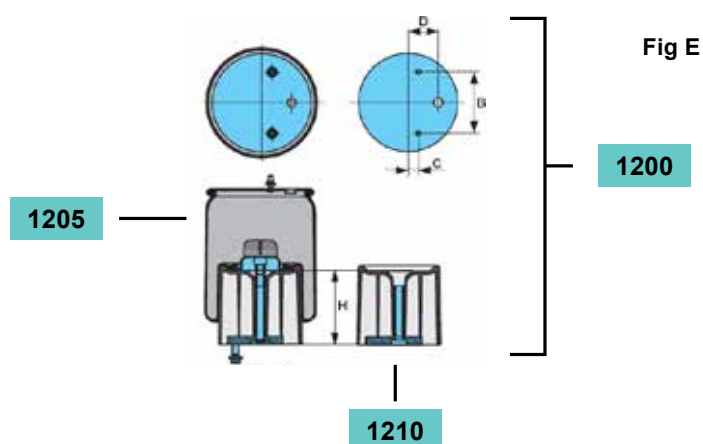
Part no.	Description	Fig	B (mm)	H (mm)	L1 (mm)
05.348.30.05.0	Trailing arm spring strap	B	90	48-58	500

FIG B



Spring Straps are required for single leaf trailing arms only.

SPRING EYE BOLT ASSEMBLY PARTS		
Trailing arm thickness incl. catch strap H (double leaf springs)	Centre bolt part no.	Centre bolt dimensions
1 x 48mm	03.341.02.31.0	M 16 x 70-8.8
2 x 33mm	03.341.02.02.0	M 16 x 90-8.8
2 x 38mm	03.341.02.03.0	M 16 x 100-8.8
2 x 40mm	03.341.02.17.0	M 16 x 105-8.8
2 x 43mm	03.341.02.18.0	M 16 x 110-8.8
2 x 48mm	03.341.02.30.0	M 16 x 120-8.8
2 x 54mm	03.341.02.32.0	M 16 x 135-8.8
Hexagon nut for center bolt	02.5202.20.80	M 16 x 934-8
S/pack sandwich plate	05082PLATE	

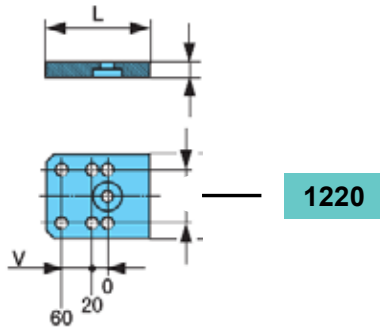


Airbag type	PARTS / KITS			KITS INCLUDE			
	Item	Description	Part no.	Item	Description	Part no.	
D30	1200	Airbag assembly GFK AUST	05.429.43.66.0				
	1205	Airbag bellow AUST	05.429.42.57.0				
	1240	Lock nut	02.5273.33.80				
	1248	Airbag piston GFK kit	05.801.09.73.0	1210	Piston GFK	05.139.39.50.0	
				1215	Threaded sleeve	03.179.03.08.0	
				1220	Base plate	03.280.95.02.0	
				1222	Centre bolt	03.340.12.23.0	
D30K	1200	Airbag assembly GFK AUST	05.429.43.65.0				
	1205	Airbag bellow AUST	05.429.42.56.0				
	1240	Lock nut	02.5273.33.80				
	1248	Airbag piston GFK kit	05.801.09.74.0	1210	Piston GFK	05.139.39.51.0	
				1215	Threaded sleeve	03.179.03.08.0	
				1220	Base plate	03.280.95.02.0	
D36	1200	Airbag assembly GFK AUST	05.429.43.69.0				
	1205	Airbag bellow AUST	05.429.42.58.0				
	1240	Lock nut	02.5273.33.80				
	1248	Airbag piston GFK kit	05.801.21.32.0	1210	Piston GFK	05.139.39.52.0	
				1215	Threaded sleeve	03.179.03.08.0	
				1220	Base plate (offset 45/80mm)	03.280.95.03.0	
				1222	Centre bolt	03.340.12.23.0	
				1224	Bolt airbag spring	02.5070.95.00	

**D:** diameter    **K:** short    **GFK:** glass fibre piston    **AUST:** special rubber material with high UV resistance

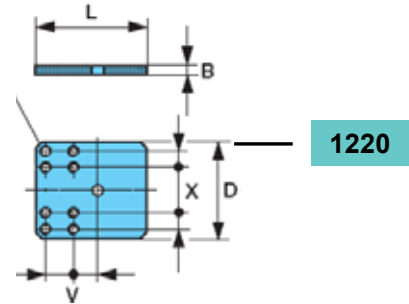
Base plates D30/D30K

Fig G



Base plates D36

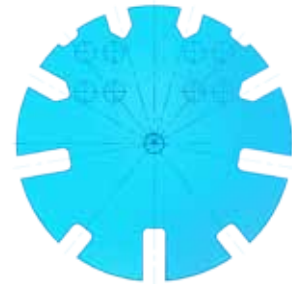
Fig H



			Dimension						
	Fig.	Qty	V	X	H	B	C	D	L
	E	1	0/20/60	70	180	150	25	70	
	E,F	1							
	F	2	M 12						
	E,F	1	Ø203x194						
	F	1	M 16x51 / SW 24						
	G	1	0/20/60	70		20		110	135
	F	1	M 16x160 - 10.9 / SW 22						
	F	2	M 16x65 / SW 22						
	E	1	0/20/60	70	135	150	25	70	
	E,F	1							
	F	2	M 12						
	E,F	1	Ø203x149						
	F	1	M 16x51 / SW 24						
	G	1	0/20/60	70		20		110	135
	F	1	M 16x115 - 10.9 / SW 22						
	F	2	M 16x65 / SW 22						
	E	1	45/80	70/120	180	210	25	95	
	E,F	1							
	F	2	M 12						
	E,F	1	Ø253x188						
	F	1	M 16x51 / SW 24						
	H	1	45/80	70/120		20		150	170
	F	1	M 16x160 - 10.9 / SW 22						
	F	2	M 16x65 / SW 22						

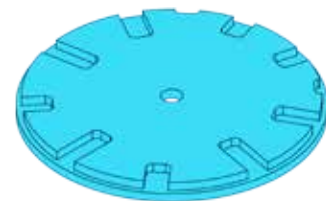
SW: spanner width

## Alternative Options



**AS-0167**

D36 Base Plate  
FOR USE ON FRONT  
AXLE OF DOG TRAILERS



**AS-0087**

D36 Heavy Duty Base Plate,  
SPECIAL APPLICATION  
ONLY, PLEASE CONTACT  
BPW TRANSPEC

### Please note:

When replacing airbags it is recommended to replace:

**O Ring M 22**

Part number 02.5677.02.00 and

**thrust ring M 22**

Part number 02.5671.08.00



# TRANSPEC

ENGINEERED TO LAST

## VICTORIA (Head Office)

1 - 11 Cherry Lane  
North Laverton, VIC 3026

p (03) 9267 2444  
f (03) 9369 4826

[www.bpwtranspec.com.au](http://www.bpwtranspec.com.au)  
[sales@bpwtranspec.com.au](mailto:sales@bpwtranspec.com.au)

**1300 651 652**

## NEW SOUTH WALES

10 Squill Place  
Arndell Park, NSW 2148

p (02) 8811 7000  
f (02) 8811 7050

## QUEENSLAND

Cnr Archerfield Road & Bernoulli Street  
Darra, QLD 4076

p (07) 3217 0877  
f (07) 3217 0230

## WESTERN AUSTRALIA

1021 Abernethy Road  
High Wycombe, WA 6057

p (08) 9454 4000  
f (08) 9454 4111