



RINGFEDER

EN

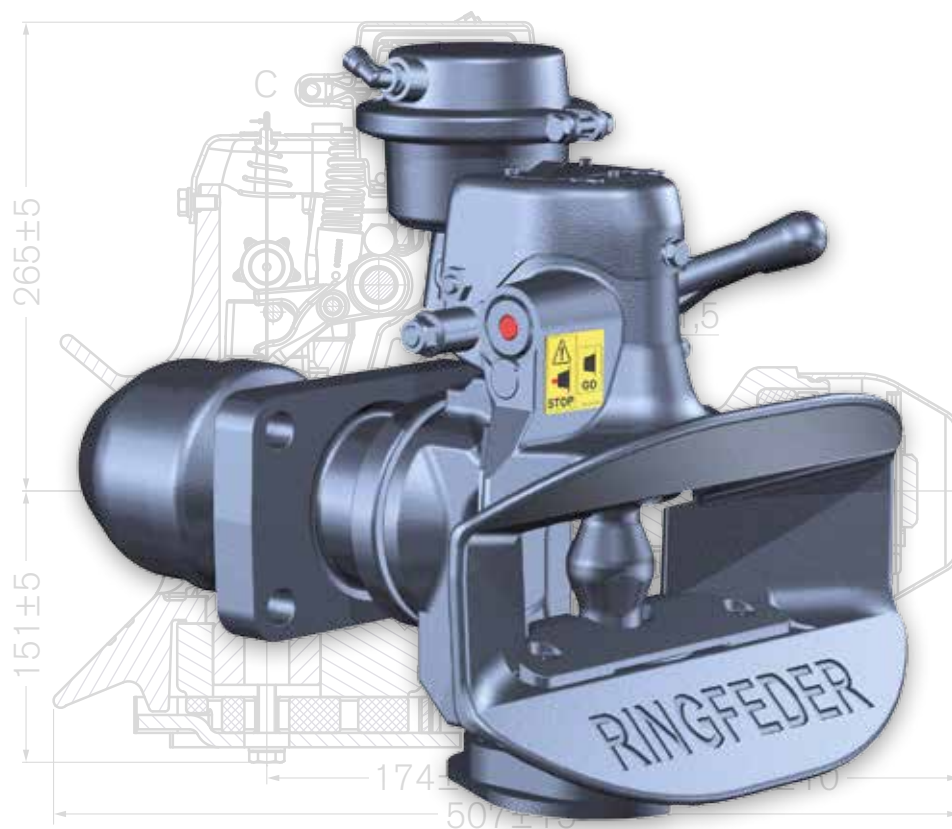
03

17

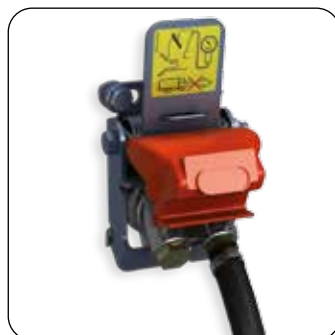
Catalogue

Automatic Trailer Coupling

RINGFEDER® Type 303 AUS AM/RL



Palm



Duomatic



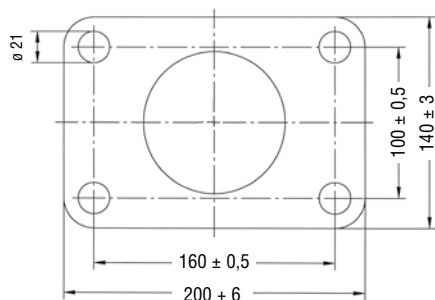
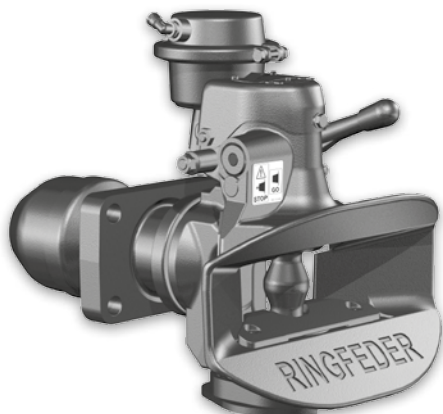
C-Coupling

Type 303 AUS AM/RL

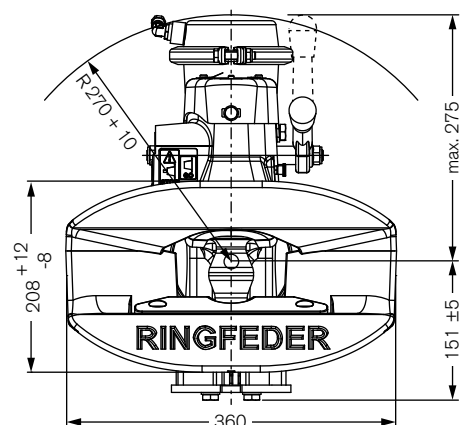
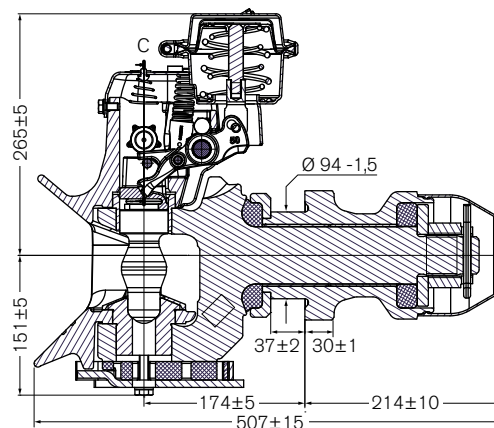
For drawbar eyes

Ø 50

DIN 74053 · ISO 1102 · D 50



Articulation of drawbar eyes D 50
horizontal ± 110°
vertical ± 20°
axial ± 360°



Technical data

Design	Class	ECE 55-01	D-Value kN	Dc-Value kN	V-Value kN	Adm. supporting load kg	Weight kg	Order number
303 AUS	C 50-X	E11 55R-0110486	320	---	---	no static vertical load - (hinged drawbar trailers only)	55	15 990 092
			---	135	75	1000		
			---	135	63	2000		
			---	170	60	1000		

AM/RL control unit



Type Palm



Type Duomatic



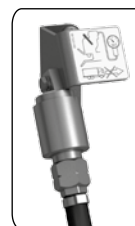
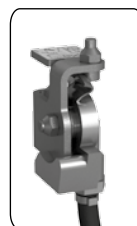
Type C-Coupling

Ausführung Design Version Versión	Bestellnummer Order number Référence article Referencia
Palm	14 999 569

Ausführung Design Version Versión	Bestellnummer Order number Référence article Referencia
Duomatic	14 999 577

Ausführung Design Version Versión	Bestellnummer Order number Référence article Referencia
C-Coupling	14 999 585

Ordering example



303 AUS AM/RL coupling without control unit

AM/RL control unit

Order number for the 303 AUS AM/RL coupling 15 990 092

+

Order number for the AM/RL control unit 14 99X XXX

=

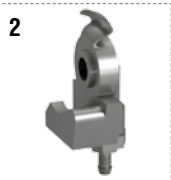
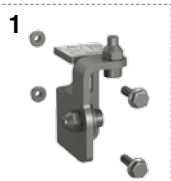
Complete order (2 order numbers)



Please note that your order must include the order number for the coupling and the order number for the control unit.

Spare parts AM/RL control unit

Type Palm



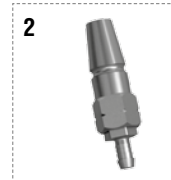
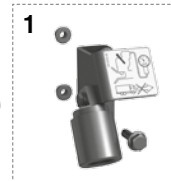
Pos.	No.	Designation
1	14 999 601	Palm-holder
2	14 999 625	Palm-coupling
3	14 999 593	Palm tube kit

Type Duomatic



Pos.	No.	Designation
1	14 999 609	Duomatic-holder
2	14 999 633	Duomatic-coupling
3	14 999 593	Duomatic tube kit

Type C-Coupling



Pos.	No.	Designation
1	14 999 617	C-Coupling-holder
2	14 999 641	C-Coupling-coupling
3	14 999 593	C-Coupling tube kit



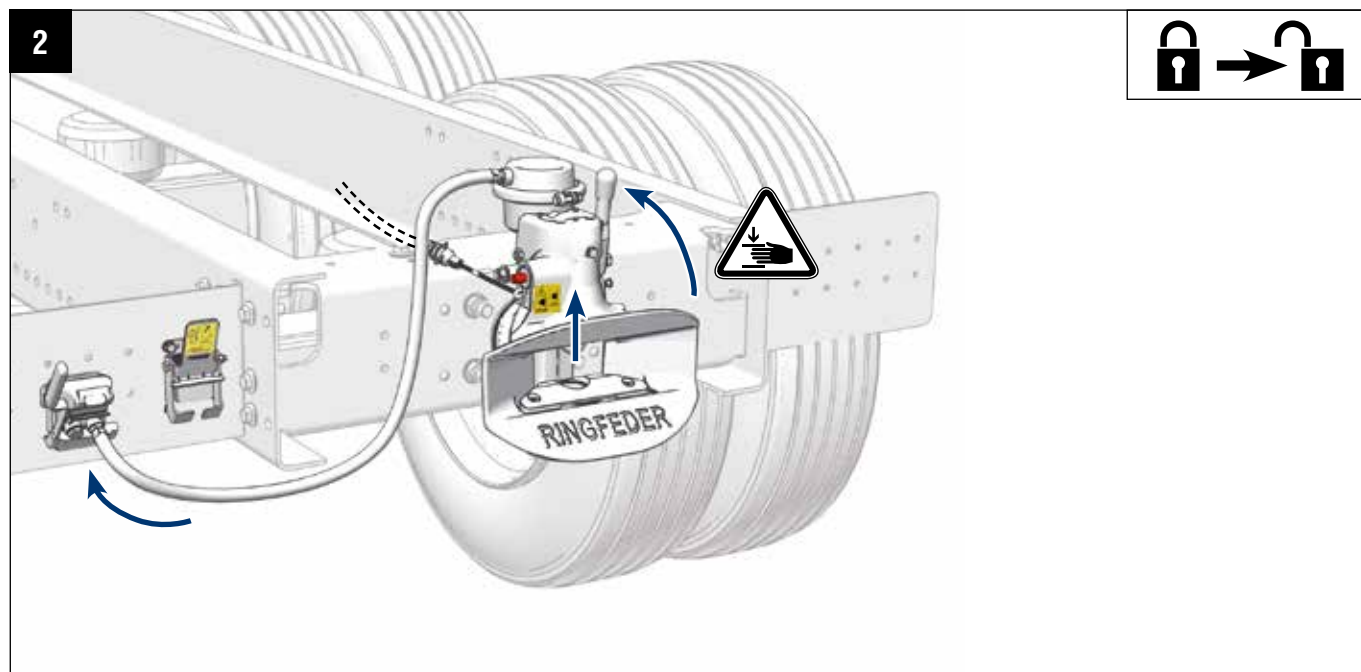
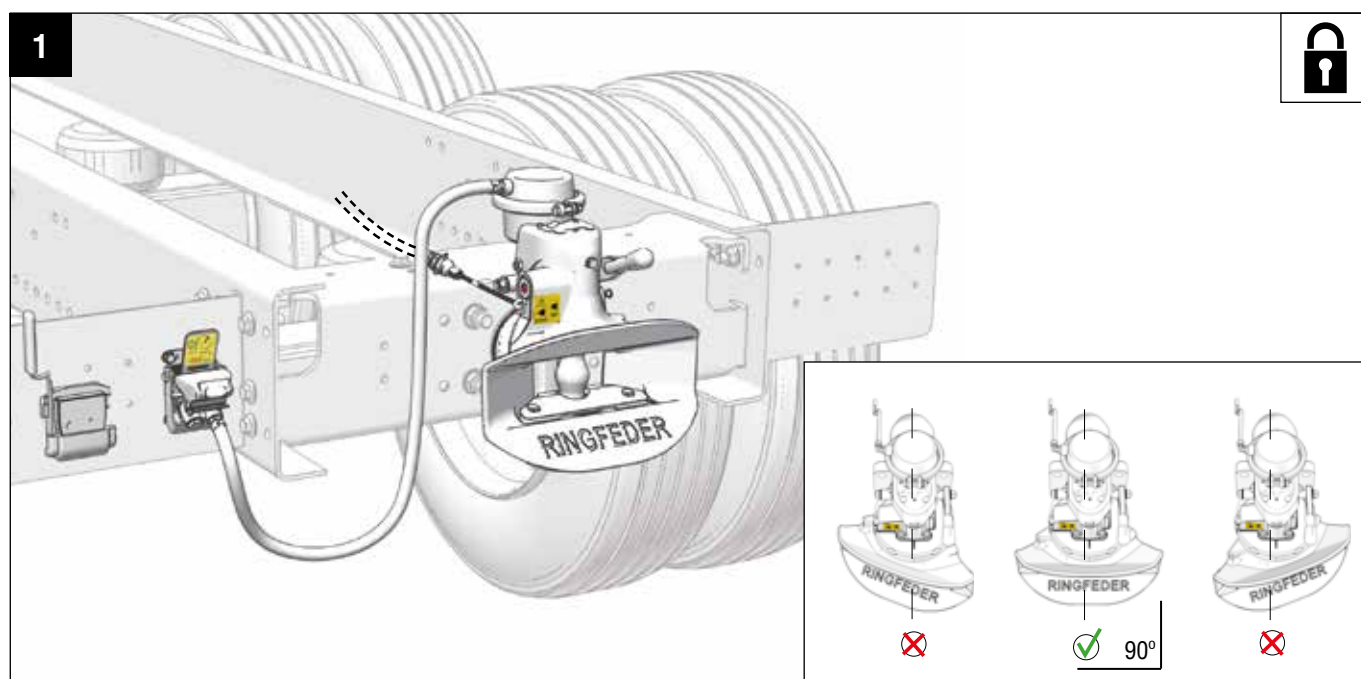
This is how it works:

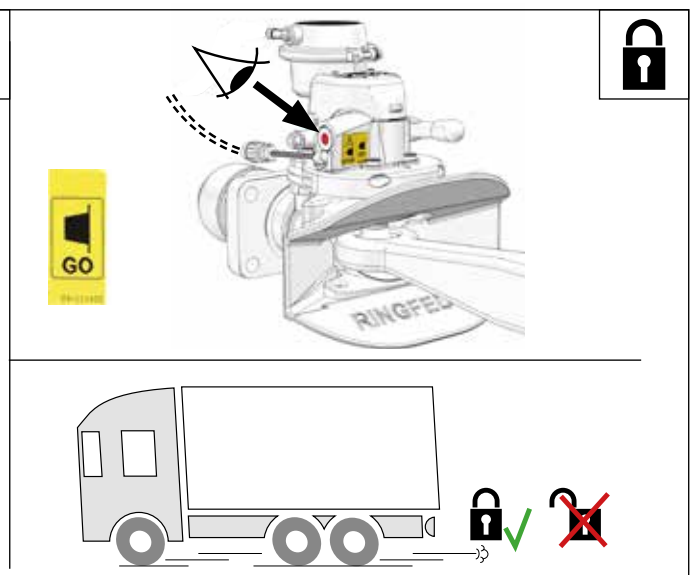
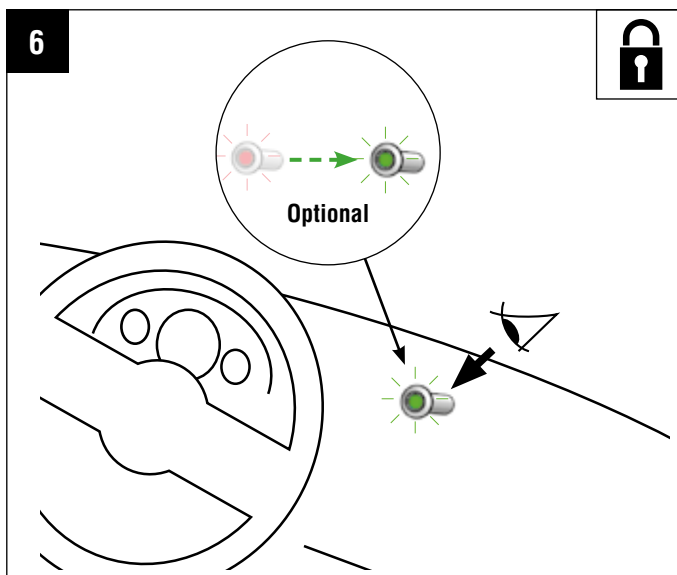
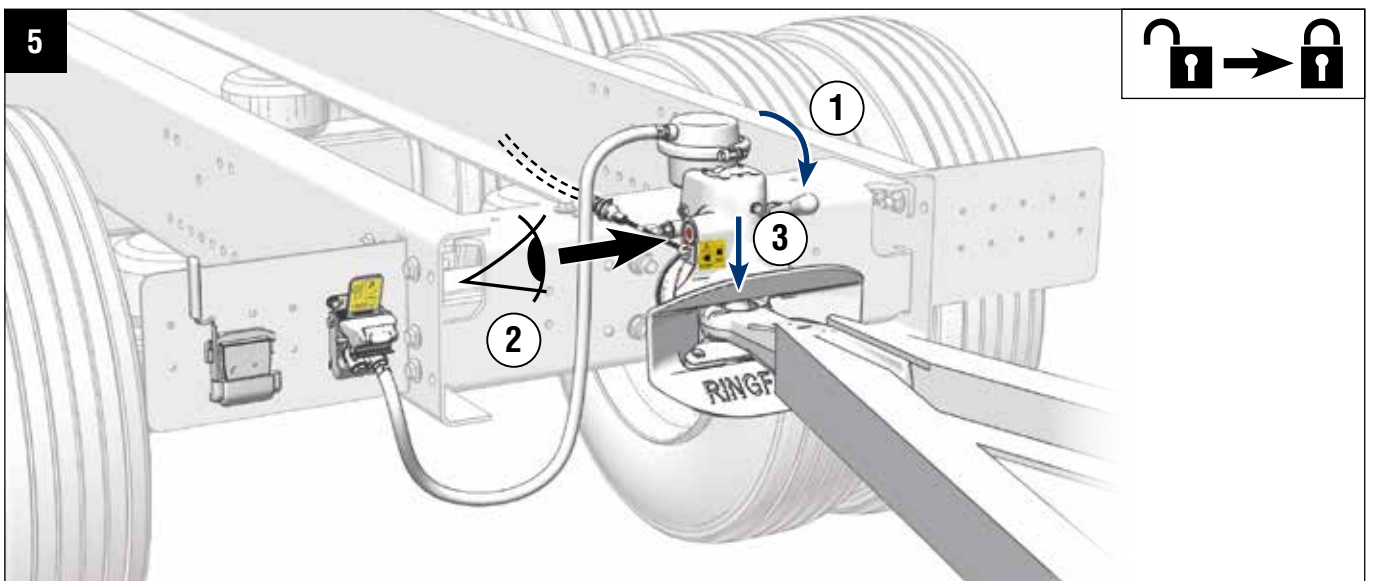
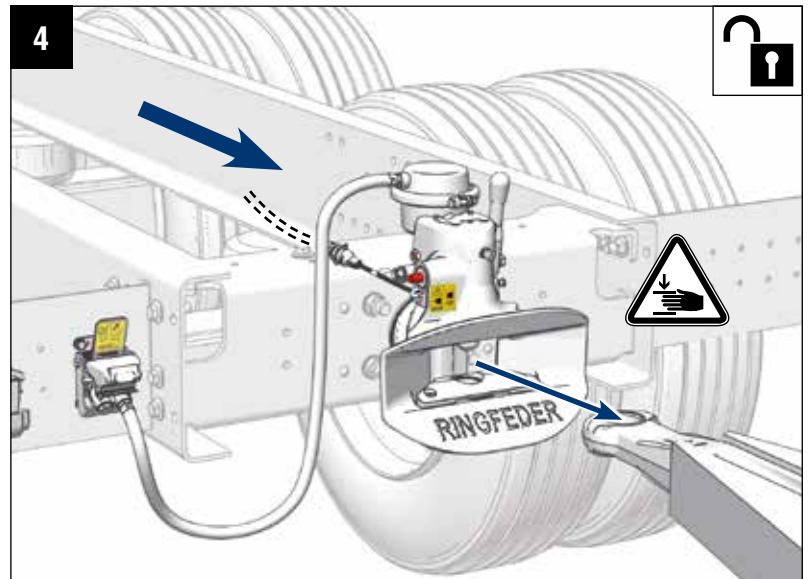
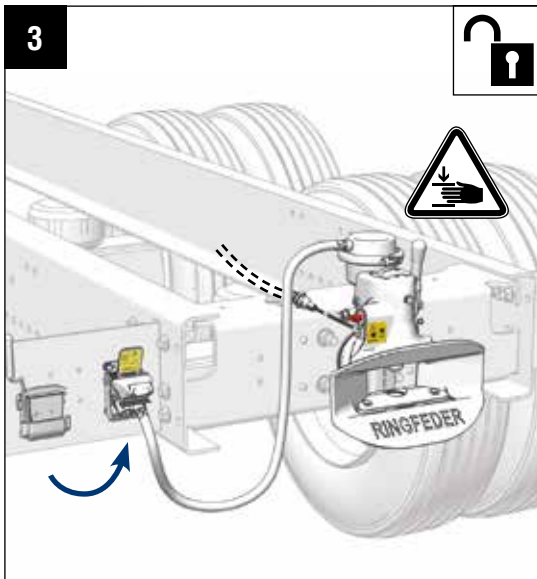
To open the Ringfeder trailer coupling with system AM/RL, remove the air hose from the holder and insert it into the trailer air supply. Once it's done, the air will stream into the AM mechanism and release the coupling pin, with a power of 3kN.

If the coupling pin won't come away at your first attempt, just go back to your vehicle, and slightly move the trailer eye to release the tension. When the pin has found the right position it will open up.

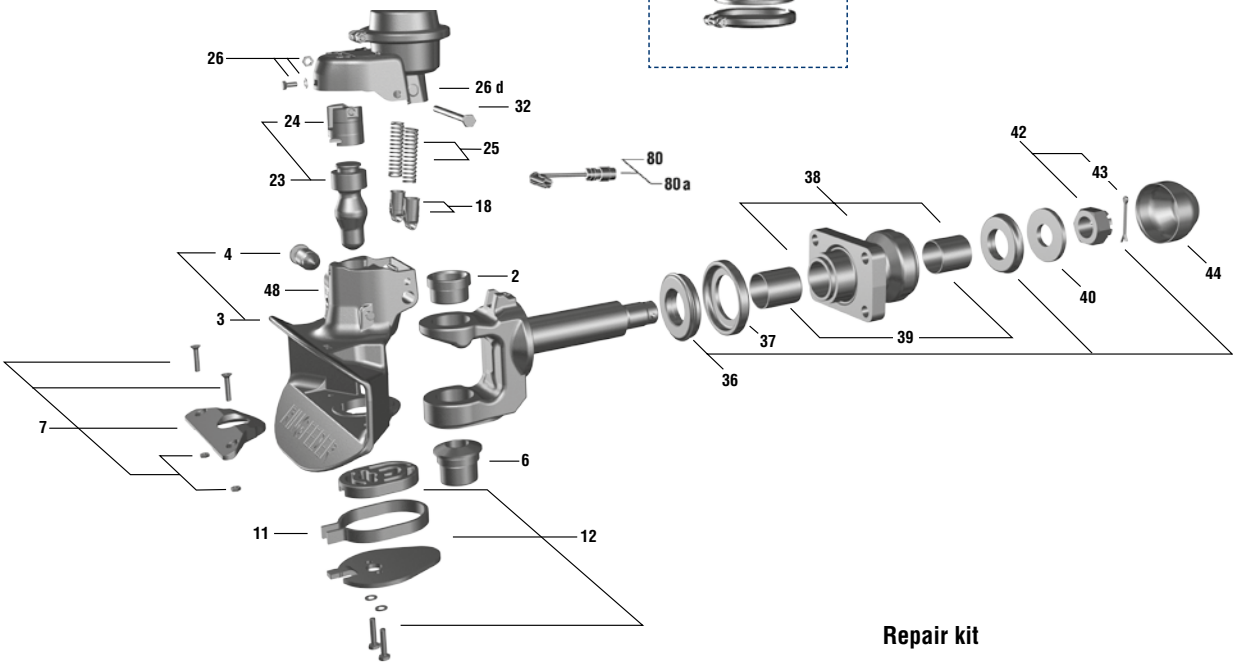
It is important that you remove the air hose from the trailer air supply and put it back in its holder since the vehicle should not be driven with the air hose connected to the trailer air supply.

Once the coupling is open and the air hose in its parking position the coupling is ready to couple.

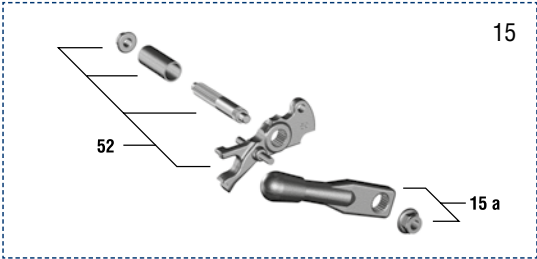




Membrane kit



Repair kit



Spare parts

Type 303 AUS AM/RL

Pos.	No.	Designation
2	14 991 384	Top guide bush
3	14 991 392	Coupling body 303 AUS AM/RL
4	14 994 478	Automatic safety device 303 AUS AM/RL
6	14 991 407	Bottom guide bush
7	06 998 321	Special plastic plate
7 a	09 996 770	Wearing plate (cast iron)
11	07 995 610	Return spring
12	14 991 399	Tab washer
15	14 991 391	Hand-/locking lever combination design A
15 a	14 991 312	Hand lever, design A/AM
18	07 998 341	Spring arm (2 pieces)
23	14 991 375	Coupling bolt
25	14 991 273	Locking spring (2 pieces)
26	14 991 390	End cap AM, cpl. AM-unit
26 d	09 122 400	Plug (10 pieces as spare part)
26 i	14 991 269	Shaft
	14 991 245	Membrane kit for AM-unit
32	14 991 359	Hexagon screw M10 x 115, 10.9
36	14 994 568	Rubber spring
37	14 994 472	Thrust washer
38	14 994 463	Bar guide
39	14 994 876	Bearing bush (2 pieces)
40	14 994 496	Tension washer
42	06 997 732	Castellated nut M45 x 3
43	12 991 533	Cotter pin 8 x 80
44	14 994 455	Protecting cap
48	09 127 100	Plug for sensor hole A/B
52	14 991 383	Axle with locking lever
80	14 991 406	Sensor (optional)
80 a	09 116 800	Sensor wedge (optional)
	14 991 665	Control unit with LED (optional)
	14 991 632	Repair kit (Pos. 2 + 6 + 7 + 23 + 43)

Type 303 AUS AM/RL



- Modular system
- Rotating coupling bolt
- Low weight
- Minimized wear
- Compatible and safe handling
- Easy to service
- Easy to operate

Technical Data

D-value for towing vehicle and full-trailer:

$$D \text{ (kN)} = g \cdot \frac{T \cdot R}{T + R}$$

The calculated D-Value may be **less or equal to** the D-value of the coupling

T: max. mass in tonnes of the towing vehicle

R: max. mass in tonnes of the full-trailer

g: acceleration due to gravity 9.81 m/s^2



TRANSPEC
ENGINEERED TO LAST

bpwtranspec.com.au
info@bpwtranspec.com.au
1300 651 652

VICTORIA (Head Office)

1-11 Cherry Lane, Laverton North VIC 3026
Phone (03) 9267 2444 Fax (03) 9369 4826

NEW SOUTH WALES

10 Squill Place, Arndell Park NSW 2148
Phone (02) 8811 7000 Fax (02) 8811 7050

QUEENSLAND

10 Bernoulli Street, Darra QLD 4076
Phone (07) 3217 0877 Fax (07) 3217 0230

WESTERN AUSTRALIA

1021 Abernethy Road, High Wycombe WA 6057
Phone (08) 9454 4000 Fax (08) 9454 4111



Produced in a certified company DIN EN ISO 9001:2008, ISO TS 16949:2009, DIN EN ISO 14001:2004

VBG GROUP TRUCK EQUIPMENT GMBH · Girmesgath 5 · D-47803 Krefeld
Phone +49 (0) 2151 835-0 · Fax +49 (0) 2151 835-200
www.ringfeder.de · e-mail: zentrale@vbgroup.com